

150 Watt, CHB150 Series, DC-DC Converter (Single Output)

ALL PSU LTD
Electronic Power Solutions

- 36-75 VDC Input Range
- Regulated Outputs
- 1500V Isolation
- Industry Standard Encapsulated Package
- Five-Sided Shield Metal Case
- Continuous Short Circuit Protection
- High Efficiency up to 85%
- -40 to +100 °C Operational Temperature Range



Specification (typical values shown)

Input Ranges.....	36~75 Volts DC
Outputs.....	Single (see table below plus trim range of +/-10%)
Line Regulation.....	+/-0.2% max. (across full input range)
Load Regulation.....	+/-0.2% max. (zero load to full load)
Efficiency.....	See table for each model
Short Circuit Protection.....	Continuous
Over Current Protection.....	110~140% of nominal rated output
Isolation Voltage.....	I/P~O/P: 1.5kVDC, I/P&O/P~Case: 1.5kVDC
Switching Frequency.....	500kHz
Operating Temperature.....	-40 to +100 °C case temperature @ full load
Thermal Shutdown.....	100 °C (typ.) case temperature
Storage Temperature.....	-40 to +105 °C
Approval.....	UL(cUL)
Case Material.....	Aluminium

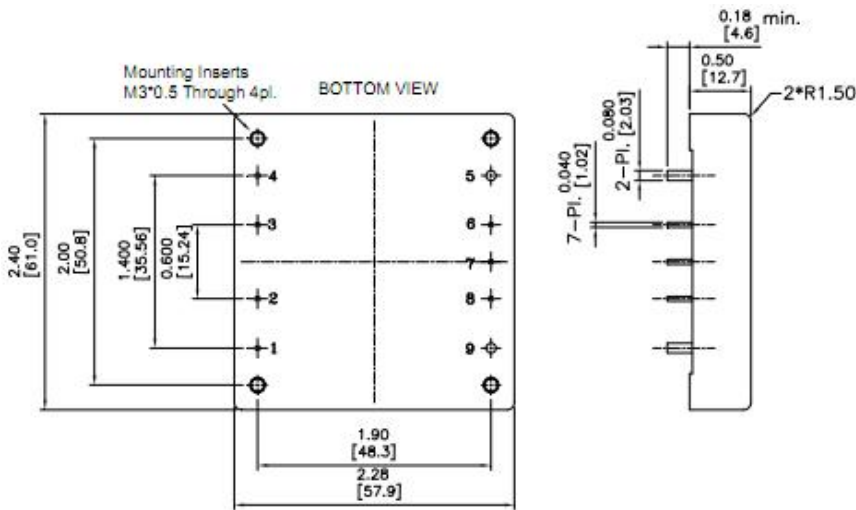
Models and Ratings

Model	Input Range	Output Voltage	Output Current	Efficiency
CHB150-48S25	36~75 VDC	2.5 V	30 A	74%
CHB150-48S33	36~75 VDC	3.3 V	30 A	79%
CHB150-48S05	36~75 VDC	5.0 V	30 A	83%
CHB150-48S12	36~75 VDC	12.0 V	12.5 A	85%
CHB150-48S15	36~75 VDC	15.0 V	10 A	85%
CHB150-48S24	36~75 VDC	24.0 V	6.5 A	85%

For mechanical data and pinout, see next page

ALL PSU Ltd, Unit D6 Laser Quay, Culpeper Close, Medway City Estate,
Rochester, Kent, ME24HU, Tel : 01634 725527, Fax : 01634 739111,
Email : sales@allpsu.co.uk , Web : www.allpsu.co.uk

Mechanical Details and Pin-Out



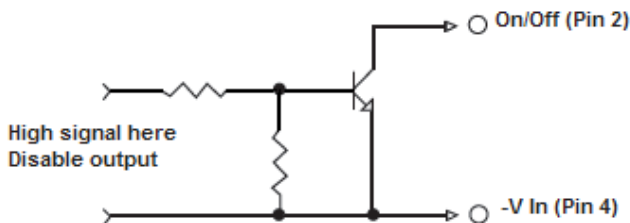
Pin	Function
1	+V In
2	On/Off
3	Case
4	-V In
5	-V Out
6	- Sense
7	Trim
8	+ Sense
9	+ V Out

Note:

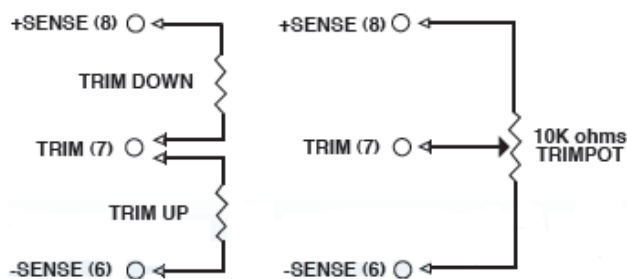
Standard remote on/off , Open Circuit = Output on, <0.8 Volts = Output off

For negative logic remote on/off, add suffix "N" to the part number, e.g. CHB150-12S12N

Remote On/Off Control



External Output Trim



Specifications may change without notice, E&OE. ALL PSU Terms & Conditions apply
ALL PSU Ltd, Unit D6 Laser Quay, Culpeper Close, Medway City Estate,
Rochester, Kent, ME2 4HU, Tel : 01634 725527, Fax : 01634 739111
Email : sales@allpsu.co.uk, Web : www.allpsu.co.uk