

# 75 Watt, CHB Series, DC-DC Converter (Dual Output)



- Wide 2:1 Input Range
- Tightly Regulated Outputs
- 1500V Isolation
- Industry Standard Encapsulated Package
- Half Brick Package Size
- Continuous Short Circuit Protection
- High Efficiency up to 84%
- -40 to +100 °C Operational Temperature Range



## Specification (typical values shown)

Input Ranges.....	18~36 Volts, 36~75 Volts
Outputs.....	Dual (see table below plus trim range of +/-5%)
Line Regulation.....	+/-0.2% max. (across full input range)
Load Regulation.....	+/-0.5% max. (zero load to full load)
Efficiency.....	See table for each model
Short Circuit Protection.....	Continuous
Over Current Protection.....	110~140% of nominal rated output
Isolation Voltage.....	I/P~O/P: 1.5kVDC, I/P&O/P~Case: 1.5kVDC
Switching Frequency.....	400kHz
Operating Temperature.....	-40 to +100 °C case temperature @ full load
Thermal Shutdown.....	100 °C (typ.) case temperature
Storage Temperature.....	-55 to +105 °C
Approval.....	UL(cUL)
Case Material.....	Aluminium base plate with plastic case
Weight.....	108 g

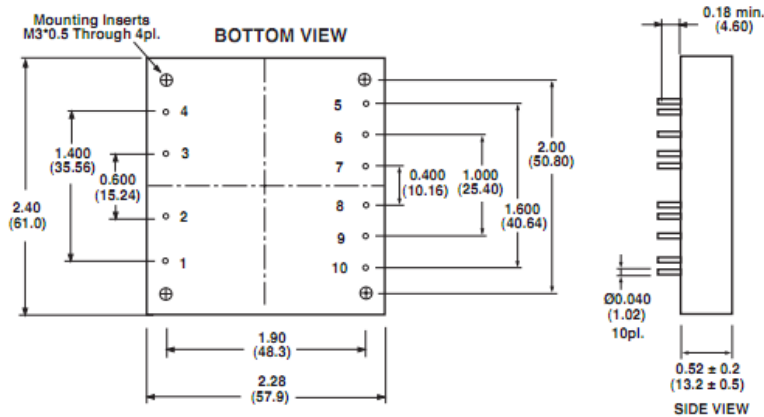
## Models and Ratings

Model	Input Range	Output Voltage	Output Current	Efficiency
CHB75-24D05-3V3	18~36 VDC	5 V 3.3 V	15.0 A 15.0 A	83%
CHB75-24D05-2V5	18~36 VDC	5 V 2.5 V	15.0 A 15.0 A	83%
CHB75-48D05-3V3	36~75 VDC	5 V 3.3 V	15.0 A 15.0 A	84%
CHB75-48D05-2V5	36~75 VDC	5 V 2.5 V	15.0 A 15.0 A	84%

For mechanical data and pinout, see next page

ALL PSU Ltd, Unit D6 Laser Quay, Culpeper Close, Medway City Estate,  
 Rochester, Kent, ME24HU, Tel : 01634 725527, Fax : 01634 739111,  
 Email : sales@allpsu.co.uk , Web : [www.allpsu.co.uk](http://www.allpsu.co.uk)

## Mechanical Details and Pin-Out



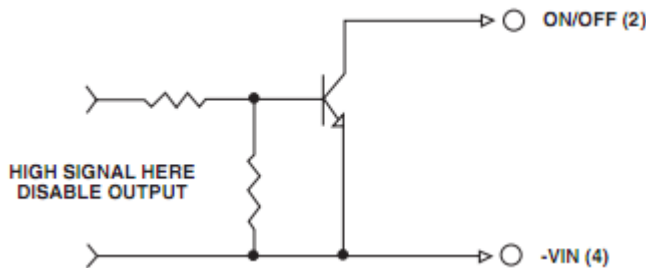
Pin	Function
1	+V In
2	On/Off
3	Case
4	-V In
5	+Vo2
6	-Vo2
7	Vo2 Trim
8	+Vo1
9	-Vo1
10	Vo1 Trim

### Note:

Standard remote on/off , Open Circuit = Output on, <0.8 Volts = Output off

For negative logic remote on/off, add suffix "N" to the part number, e.g. CHB75-24D05-3V3N

### Remote On/Off Control



### External Output Trim

