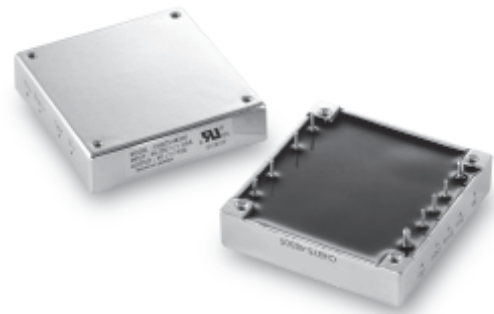


# 75 Watt, CHB-W Series, DC-DC Converter (Single Output)

- Wide 4:1 Input Range
- Tightly Regulated Outputs
- 1500V Isolation
- Industry Standard Encapsulated Package
- Five Sided Metal Case
- Continuous Short Circuit Protection
- High Efficiency up to 85%
- -40 to +100 °C Operational Temperature Range



## Specification (typical values shown)

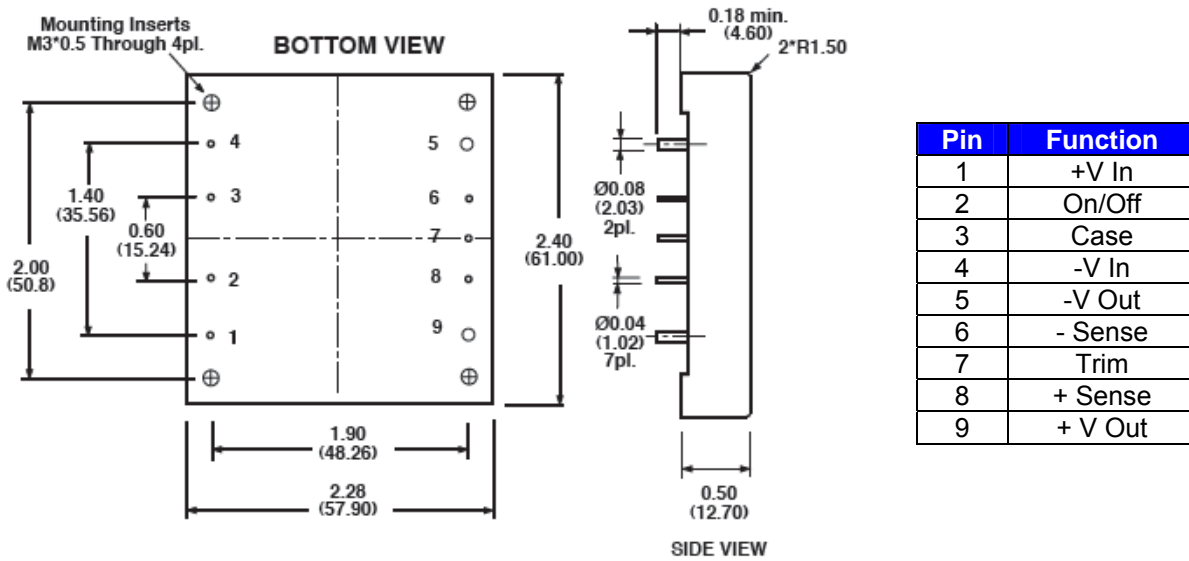
Input Ranges.....	9~36 Volts, 18~75 Volts
Outputs.....	Single (see table below plus trim range of +/-10%)
Line Regulation.....	+/-0.2% max. (across full input range)
Load Regulation.....	+/-0.2% max. (zero load to full load)
Efficiency.....	See table for each model
Short Circuit Protection.....	Continuous
Over Current Protection.....	110~160% of nominal rated output
Isolation Voltage.....	I/P~O/P: 1.5kVDC, I/P&O/P~Case: 1.5kVDC
Switching Frequency.....	300kHz
Operating Temperature.....	-40 to +100 °C case temperature @ full load
Thermal Shutdown.....	100 °C (typ.) case temperature
Storage Temperature.....	-55 to +105 °C
Approval.....	UL(cUL)
Case Material.....	Aluminium, 5 sided shield
Weight.....	94 g

## Models and Ratings

Model	Input Range	Output Voltage	Output Current	Efficiency
CHB75W-24S33	9~36 VDC	3.3 V	15.0 A	79%
CHB75W-24S05	9~36 VDC	5.0 V	15.0 A	82%
CHB75W-24S12	9~36 VDC	12.0 V	6.25 A	83%
CHB75W-24S15	9~36 VDC	15.0 V	5.0 A	84%
CHB75W-24S24	9~36 VDC	24.0 V	3.12 A	84%
CHB75W-48S33	18~75 VDC	3.3 V	15.0 A	80%
CHB75W-48S05	18~75 VDC	5.0 V	15.0 A	83%
CHB75W-48S12	18~75 VDC	12.0 V	6.25 A	84%
CHB75W-48S15	18~75 VDC	15.0 V	5.0 A	85%
CHB75W-48S24	18~75 VDC	24.0 V	3.12 A	85%

For mechanical data and pinout, see next page

## Mechanical Details and Pin-Out

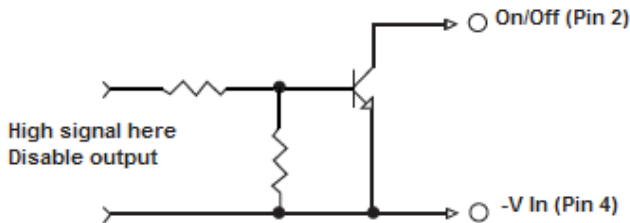


### Note:

Standard remote on/off , Open Circuit = Output on, <0.8 Volts = Output off

For negative logic remote on/off, add suffix "N" to the part number, e.g. CHB75W-24S12N

### Remote On/Off Control



### External Output Trim

