

- 1U High, 5 x 3" Foot Print Mini Chassis
- Universal AC Input
- Medical & Industrial Approvals
- 1.5 to 58 Volts, 1 to 4 Outputs
- High Efficiency – up to 89%
- I²C Control Option
- Remote Current/Voltage Programming
- Accurate Current Sharing
- Parallel & Series Capability



Description : The NEVO600 series is a modular factory or user configurable power supply offering unrivalled performance and flexibility. Delivering up to 600 Watts from 5 x 3" x 1U height package, the NEVO is the ultimate power solution for the applications where size and weight are vital factors. Each system consists of an input chassis together with up to four isolated output modules which can be connected in series or parallel for higher Voltages or Power if required. The series carries full UL60601 & UL60950 safety approvals for Industrial and Medical applications and comply with EN61000-3, EN61000-4 and EN55022-B EMC standards.

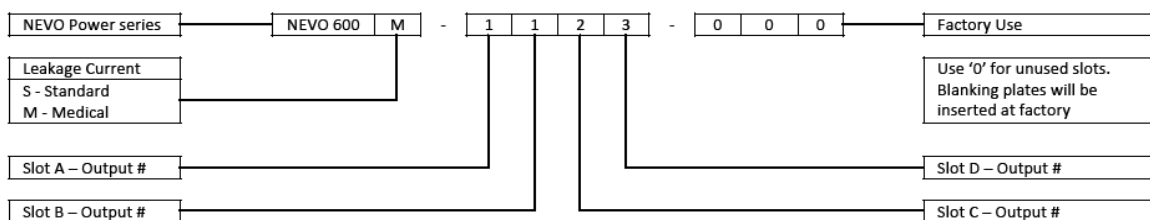
Specification

Input Voltage.....	85~264 VAC (120~370 VDC), 47~63 Hz
Power Factor.....	0.96 typical, (300 watts @ 240 VAC input)
Output Voltage.....	See table below for output module options
Output Power	600 Watts Maximum (depends on output modules used)
Over Load Protection.....	105% ~ 125% of rated current
Over Voltage Protection.....	5V(9.5V), 12V(18V), 24V(36V), 48V(66V), Latching
Hold Up Time.....	20 ms (600 watts @ 180VAC input, typical)
Efficiency.....	86-89% dependent on output voltage
Operating Temperature.....	-20 °C to +70 °C, see derating curve
Storage Temperature.....	-40 to +85 °C
Isolation.....	I/P-O/P: 4 kVAC,
Humidity.....	5~95% relative humidity, non condensing
EMC.....	EN55011, EN55022, FCC, EN61000-3,2,3, EN61000-4-2,3,4,5,6,8,11
Safety Approvals.....	UL60950-1, IEC/EN60950-1, CSA-C22.2 No. 60950-1-03 UL60601-1 for Medical version
Dimensions (Housing).....	129.7(L) x 77.7(W) x 41(H) mm

Output Modules, any combination of 1 to 4 modules can be fitted.

Output Power Module	Nominal Output Voltage	Output Voltage Range	Maximum Output Current
Output Module 1	5 V	1.5 ~ 7.5 V	25 A
Output Module 2	12 V	4.5 ~ 15 V	15 A
Output Module 3	24 V	9 ~ 30 V	7.5 A
Output Module 4	48 V	18 ~ 58 V	3.75 A

Part Numbering System

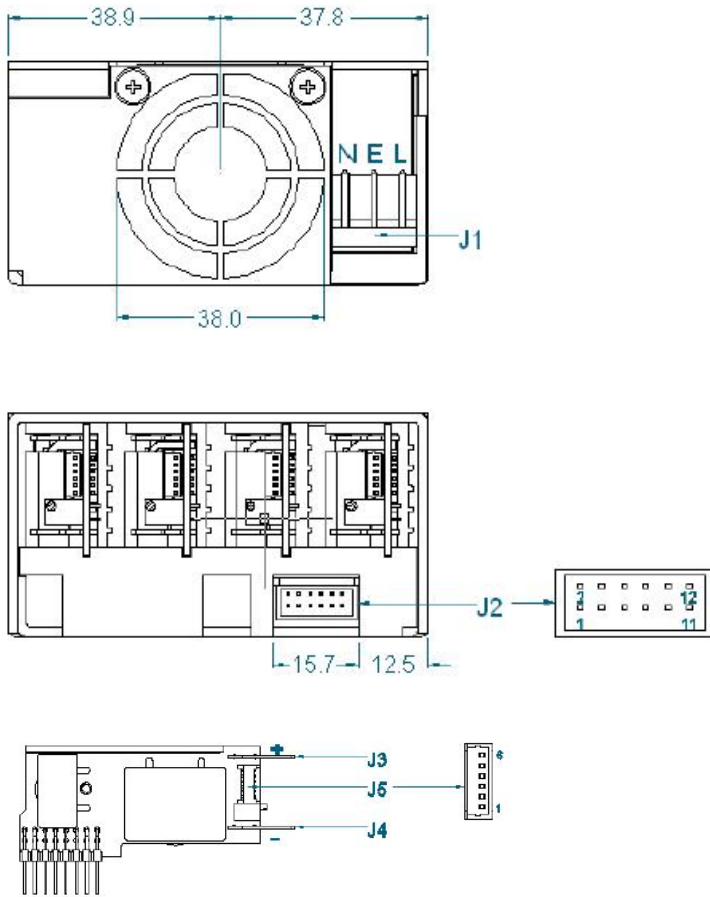


When initially ordering non-nominal voltage settings add " /Voltage" after each output # where a special voltage setting is required
E.g. If 3.30Vdc is required in slot B and all other slots require nominal voltages then use:

NEVO 600M - 1 - 1/3.30 - 2 - 3

The factory will then issue a 3 digit code for your specific configuration that can be used for all future orders of the same configuration
When ordering an input unit with no outputs inserted, simply order NEVO 600M or NEVO 600S

Connection Details



J1	
PIN	Assignment
1	Live
2	Earth
3	Neutral

J2		
PIN	Assignment	
1	Power Good	Slot A
2	Inhibit	
3	Power Good	Slot B
4	Inhibit	
5	Power Good	Slot C
6	Inhibit	
7	Power Good	Slot D
8	Inhibit	
9	Global Inhibit	
10	AC OK	
11	+5V 200mA Bias Supply	
12	Common	

J3	
1	Positive Output
J4	
1	Negative Output
J5	
1	- Sense
2	+ Sense
3	Voltage Control
4	Current Control / Share / Out
5	Common
6	+5V local bias supply

Ref.	Connector Details	Manufacturer	Housing	Terminal
J1	Mains Input : 3 PIN.5.08 with friction lock, 18~24 AWG	Molex	10013036	8701031
J2	Global Signals: 12 PIN, 2mm, with friction lock 24~30 AWG	Molex	511101260	503948051
J2	IDT Alternative for J2	Molex	875681273	N/A
J3/J4	Output Power Terminal : Tab Size 6.35mm x 0.8mm	Various	N/A	N/A
J5	Output Signals: 6 PIN, 1.25mm, with friction lock, 28~32 AWG	Molex	1510210600	50058800

Notes

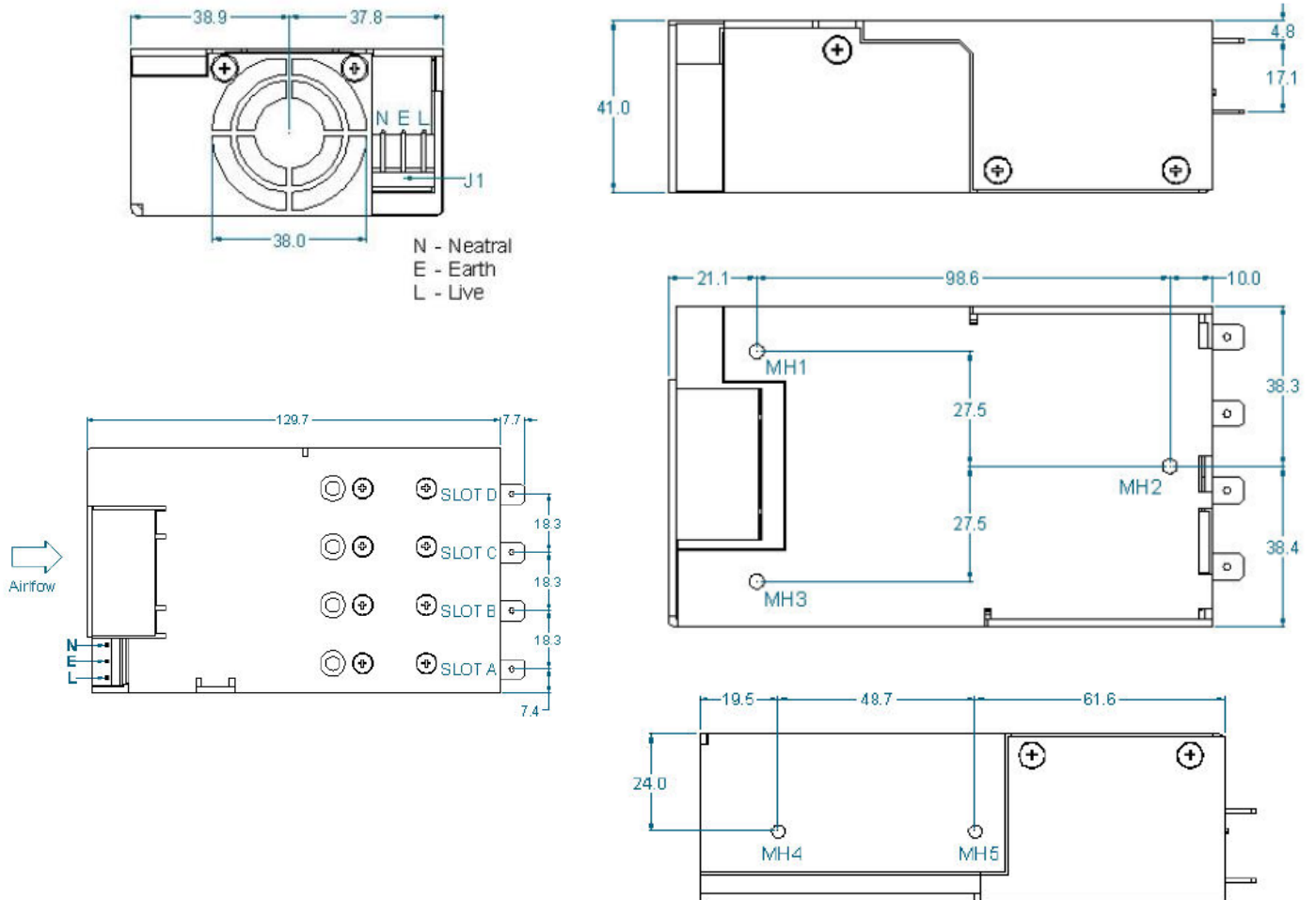
1. Terminal and wire current rating must exceed max short circuit output current. eg O/P 1 = 25 x 1.25 = 31.25 A
2. Direct equivalents may be used for any connector parts
3. All cables must be rated 105°C min, equivalent to UL1015

Please see next page for mechanical details

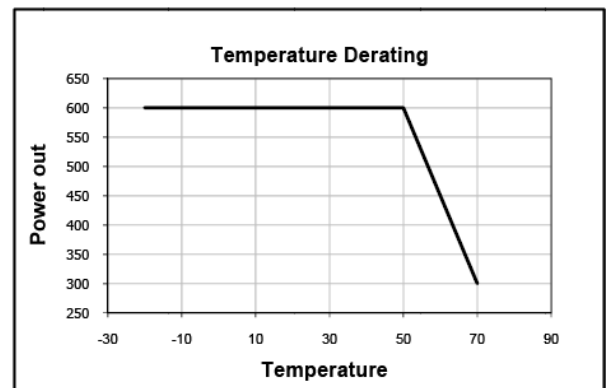
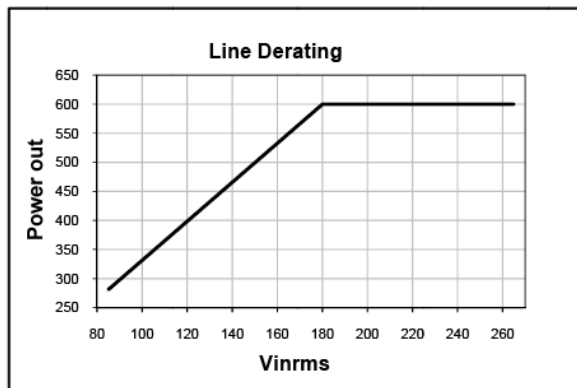
Specifications are subject to change without notice, E&OE. ALL PSU Terms & Conditions apply.

**ALL PSU Ltd, Unit D6 Laser Quay, Culpeper Close, Medway City Estate,
Rochester, Kent, ME2 4HU, Tel : 01634 725527, Fax : 01634 739111,
Email : sales@allpsu.co.uk, Web : www.allpsu.co.uk**

Mechanical Details



Derating Curves



Specifications are subject to change without notice, E&OE. ALL PSU Terms & Conditions apply.

**ALL PSU Ltd, Unit D6 Laser Quay, Culpeper Close, Medway City Estate,
Rochester, Kent, ME2 4HU, Tel : 01634 725527, Fax : 01634 739111,
Email : sales@allpsu.co.uk, Web : www.allpsu.co.uk**