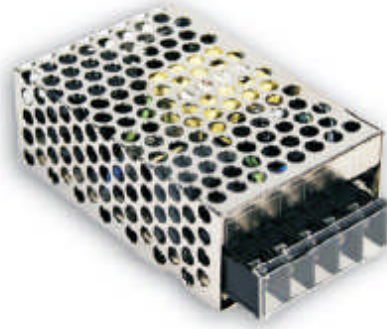


25 Watt, RS Series, Fully Enclosed (Single Output)

- Miniature Size, High Power Density
- Protections : Short Circuit / Overload / OVP
- Universal AC Input
- Withstand 300 VAC Surge Input For 5 Seconds
- High Operating Temperature Up To 70 °C
- 5G Vibration Test
- High Efficiency, Long Life And High Reliability
- 100% Full Load Burn-In Test
- 3 Year Warranty
- DIN Rail Mounting Kits Available



Specification

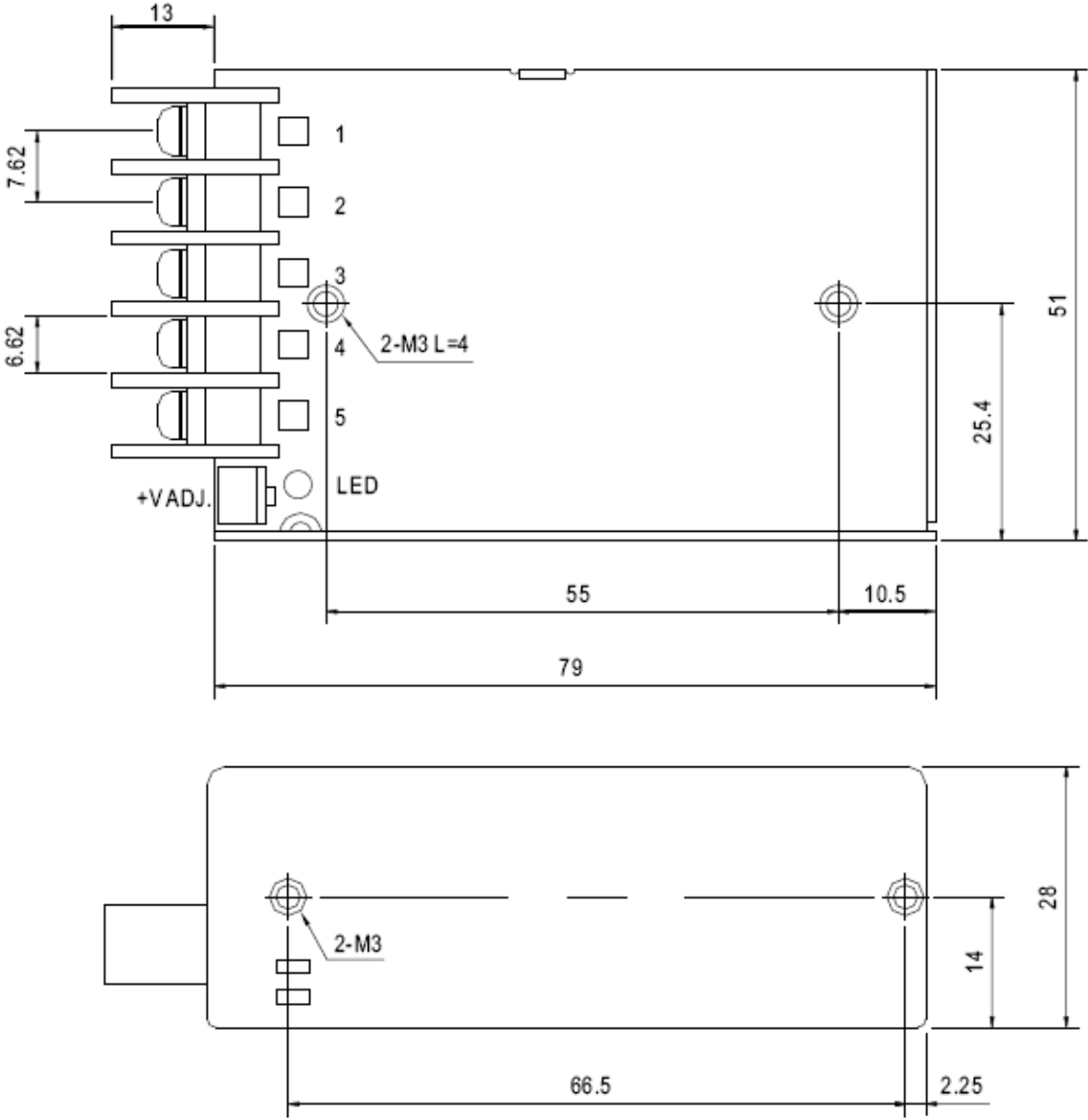
AC Input Voltage Range.....	88-264 VAC (125 – 373 VDC)
Max AC Input.....	Withstands 300VAC surge for 5 Seconds
AC Inrush Current (max).....	Cold start, 30A @ 230 VAC
DC Output Adjustment Range.....	+/- 10%
Over Load Protection.....	110%-180% hiccup mode, (auto-recovery)
Over Voltage Protection.....	115%-135% rated output voltage, hiccup mode (auto-recovery)
Isolation Voltage.....	I/P-O/P: 3 kVAC, I/P-F/G: 1.5 kVAC, O/P-F/G: 0.5 kVAC, 1 min.
Operating Temperature.....	-20 to +70 °C (see derating curve)
Switching Frequency.....	60 kHz
Vibration.....	10-500 Hz, 5G 10min/1 cycle, period for 60min each along X, Y, Z axes
Safety Standards.....	UL60950-1, TUV EN60950-1 approved
EMC Standards.....	EN55022 class B, EN61000-3-2, 3 EN61000-4-2, 3, 4, 5, 6, 8, 11 ENV50204 Light industry level, Criteria A
Connection.....	Terminal block
Dimensions.....	79(L) x 51(W) x 28(H) (mm) (plus terminals)
MTBF.....	309.7 khrs (MIL-HDBK-217F) @ 25 °C
Weight.....	0.2 kg

Models and Ratings

Model	Output	Ripple/ Noise	Efficiency
RS-25-3.3	3.3 V / 6 A	80 mV	72%
RS-25-5	5 V / 5 A	80 mV	77%
RS-25-12	12 V / 2.1 A	120 mV	79%
RS-25-15	15 V / 1.7 A	120 mV	82%
RS-25-24	24 V / 1.1 A	120 mV	84%
RS-25-48	48 V / 0.57 A	200 mV	85%

See next page for mechanical details and derating

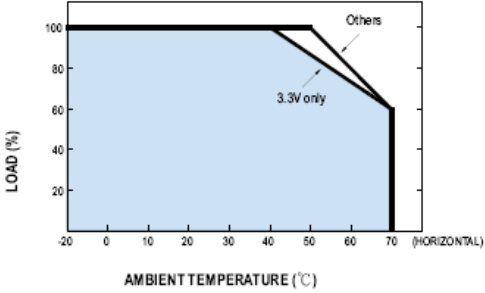
Mechanical Details



Connections

Terminal	Function
1	AC Live
2	AC Neutral
3	F/Gnd
4	-V Out
5	+V Out

Derating Curve



Specifications May Change Without Notice, E&OE. ALL PSU Terms & Conditions apply.

**ALL PSU Ltd, Unit D6 Laser Quay, Culpeper Close, Medway City Estate,
Rochester, Kent, ME2 4HU, Tel : 01634 725527, Fax : 01634 739111
Email : sales@allpsu.co.uk , Web : www.allpsu.co.uk**