

50 Watt, RS Series, Fully Enclosed (Single Output)

ALL PSU LTD
Electronic Power Solutions

- Compact Size, High Power Density
- Protections: Short Circuit / OLP / OVP
- Meet EMS EN50082-2 / EN61000-6-2 Heavy Industrial Level
- Withstand 300 VAC Surge Input For 5 seconds
- High Operating Temperature Up To 70 °C
- 5G Vibration Test
- High Efficiency, Long Life And High Reliability
- 100% Full Load Burn-In Test
- 3 Year Warranty
- DIN Rail Mounting Kits Available



Specification

| | |
|---------------------------------|--|
| AC Input Voltage Range..... | 88-264 VAC (125-373 VDC) |
| AC Inrush Current (max)..... | Cold start, 40A @ 230 VAC |
| DC Output Adjustment Range..... | +/-10% |
| Over Load Protection..... | 110%-150% hiccup mode, (auto recovery) |
| Over Voltage Protection..... | 115%-135% of rated output voltage, hiccup mode (auto-recovery) |
| Isolation Voltage..... | Input-output: 3 kVAC, I/P-F/G: 1.5 kVAC O/P-F/G: 0.5 kVAC, 1 min |
| Operating Temperature..... | -25 to +70 °C (refer to derating curve) |
| Vibration..... | 10-500 Hz, 5G 10min/1 cycle, period for 60 min each along X, Y, Z axes |
| Safety Standards..... | UL60950-1, TUV EN60950-1 approved |
| EMC Standards..... | EN55022 class B, EN61000-3-2, 3 EN61000-4-2, 3, 4, 5, 6, 8,11 ENV50204 EN61000-6-2 (EN50082-2) |
| Connection..... | Screw terminal block |
| Dimensions: L x W x H..... | 99 x 97 x 36 (mm) |
| MTBF..... | 228 khrs (MIL-HDBK-217F) @ 25 °C |
| Weight..... | 0.41 kg |

Models and Ratings

| Model | Output | Adjustment | Ripple/ Noise | Efficiency |
|-----------|--------------|-------------|---------------|------------|
| RS-50-3.3 | 3.3 V / 10 A | 3.0-3.6 V | 80 mV | 72% |
| RS-50-5 | 5 V / 10 A | 4.75-5.5 V | 80 mV | 78% |
| RS-50-12 | 12 V / 4.2 A | 10.8-13.2 V | 120 mV | 81% |
| RS-50-15 | 15 V / 3.4 A | 13.5-16.5V | 120 mV | 83% |
| RS-50-24 | 24 V / 2.2 A | 22.0-27.2 V | 120 mV | 84% |
| RS-50-48 | 48 V / 1.1 A | 42.0-54.0 V | 200 mV | 86% |

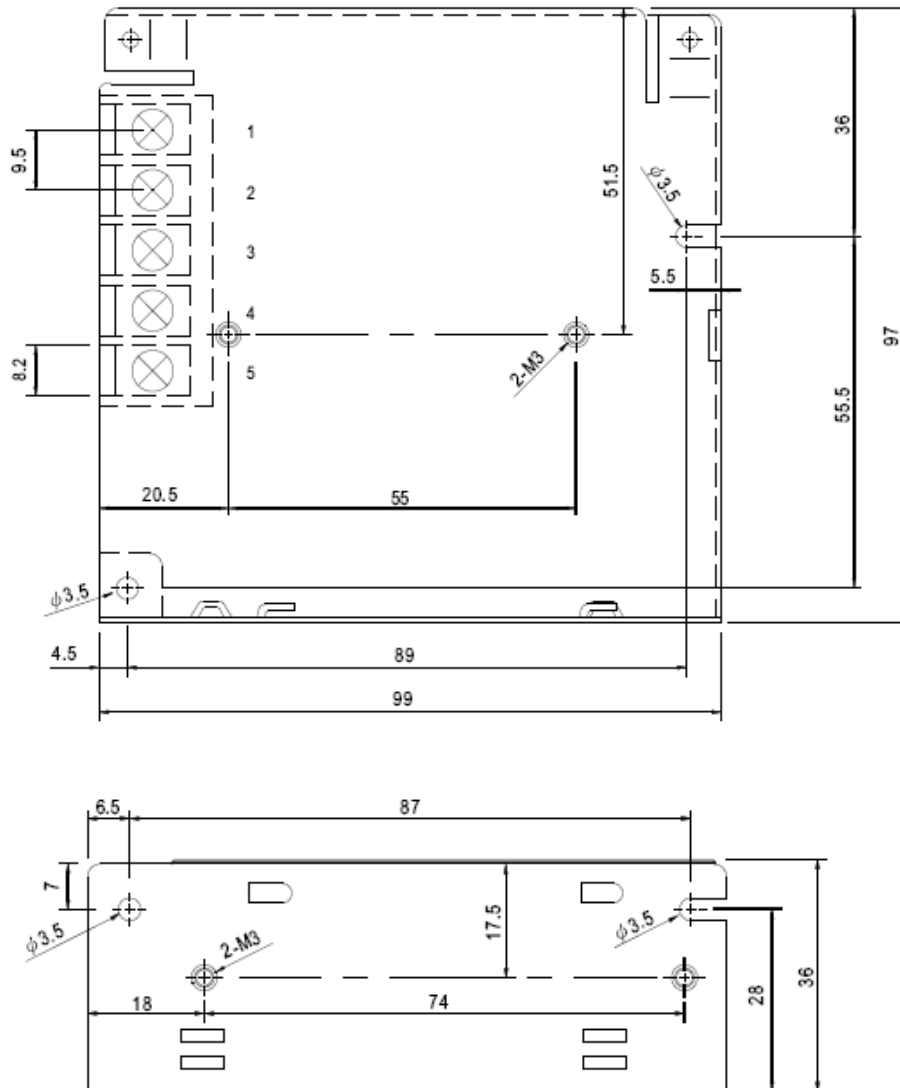
For mechanical details and connections, see next page

ALL PSU Ltd, Unit D6 Laser Quay, Culpeper Close, Medway City Estate,
Rochester, Kent, ME2 4HU, Tel : 01634 725527, Fax : 01634 739111
Email: sales@allpsu.co.uk Web: www.allpsu.co.uk

50 Watt, RS Series, Fully Enclosed (Single Output)

ALL PSU LTD
Electronic Power Solutions

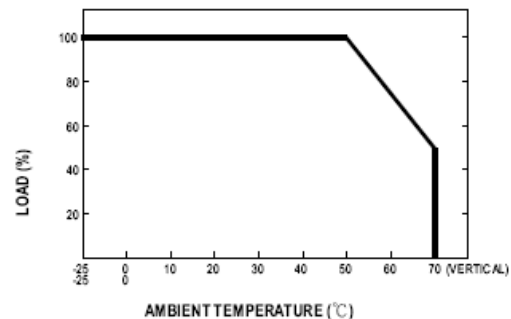
Mechanical Details



Connections

| Pin Number | Function |
|------------|------------|
| 1 | AC Live |
| 2 | AC Neutral |
| 3 | F/G |
| 4 | -V Out |
| 5 | +V Out |

Derating Curve



Specifications May Change Without Notice, E&OE. ALL PSU Terms & Conditions apply.

**ALL PSU Ltd, Unit D6 Laser Quay, Culpeper Close, Medway City Estate,
Rochester, Kent, ME2 4HU, Tel : 01634 725527, Fax : 01634 739111
Email: sales@allpsu.co.uk Web: www.allpsu.co.uk**