

150 Watt, PLA Series, Fully Enclosed (Single Output)



electronicpowersolutions

- Miniature Size, High Power Density
- Protections: Overload / Over Voltage
- Wide Temperature Range -20~+70 °C
- High Efficiency, Long Life & High Reliability
- 100% Full Load Burn-In Test
- 5 Year Warranty & Lowest Life Time Cost
- Remote ON/OFF & Conformal Coating Options



Specification

AC Input Voltage Range.....	85-264 VAC
AC Inrush Current (max).....	Cold start, 32A @ 230 VAC
DC Output Adjustment Range.....	+/- 10% via on board potentiometer
Over Load Protection.....	Works above 105% (auto recovery)
Over Voltage Protection.....	115%-140% of rated output voltage
Remote On/Off.....	Option -R, requires external voltage
Isolation Voltage.....	I/P-O/P: 3 kVAC, I/P-F/G: 2 kVAC O/P-F/G: 0.5 kVAC, 1 min
Operating Temperature.....	-20 to +70 °C (see derating curve)
Vibration.....	10-55 Hz, 19.6m/s ² (2G), 3 minutes period, 60 minutes each along X, Y, Z axes
Conformal Coating.....	Order as option -C
Safety Standards.....	UL60950-1, C-UL, EN50178, UL508 (except option-J) complies with DEN-AN, EN60950-1 approved
EMC Standards.....	FCC-B, VCCI-B, CISPR22-B, EN55011-B, EN55022-B Complies with IEC61000-3-2 Class A, EN61204-3, EN61000-6-2, EN61000-4-2,3,4,5,6,8,11
Connection.....	Screw terminal block (horizontal) Option -T Vertical screw terminals Option -J Plug-in connections
Dimensions (L x W x H).....	129 x 97 x 41 mm (excluding connections)
Weight.....	0.6 kg max

Models and Ratings

Model	Output Voltage / Max Current	Output Voltage Adjustment Range	Efficiency 230VAC Input
PLA150F-12	12 V / 12.5 A	10.8 - 13.2 V	87%
PLA150F-15	15 V / 10 A	13.5 - 16.5 V	87%
PLA150F-24	24 V / 6.4 A	21.6 - 26.4 V	90%
PLA150F-36	36 V / 4.2 A	32.4 - 39.6 V	90%
PLA150F-48	48 V / 3.2 A	43.2 - 52.8 V	90%

For mechanical & connection details see next page

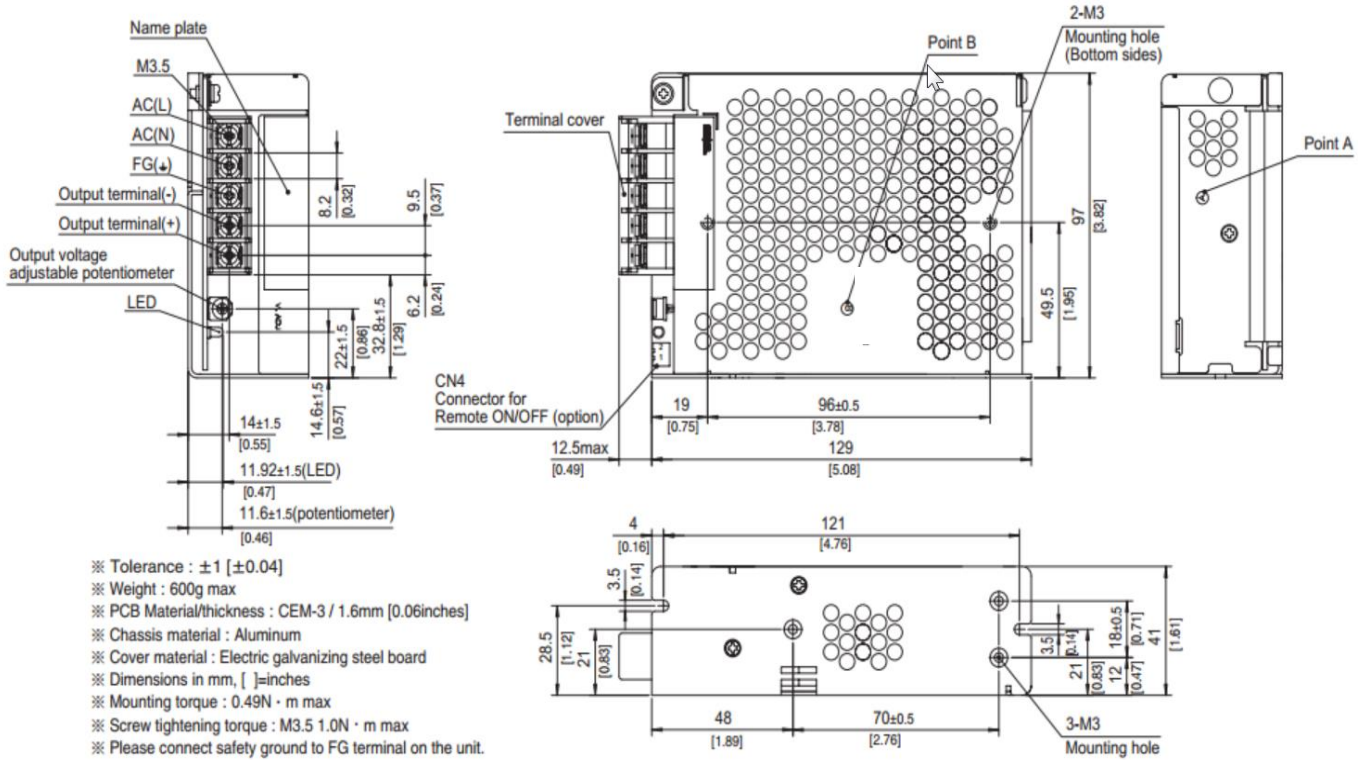
ALL PSU Ltd, Unit D6 Laser Quay, Culpeper Close, Medway City Estate,
Rochester, Kent, ME2 4HU, Tel : 01634 725527, Fax : 01634 739111
Email: sales@allpsu.co.uk Web: www.allpsu.co.uk

150 Watt, PLA Series, Fully Enclosed (Single Output)



electronic powersolutions

Mechanical Details



- ※ Tolerance : ±1 [±0.04]
- ※ Weight : 600g max
- ※ PCB Material/thickness : CEM-3 / 1.6mm [0.06inches]
- ※ Chassis material : Aluminum
- ※ Cover material : Electric galvanizing steel board
- ※ Dimensions in mm, []=inches
- ※ Mounting torque : 0.49N · m max
- ※ Screw tightening torque : M3.5 1.0N · m max
- ※ Please connect safety ground to FG terminal on the unit.

Derating Curve

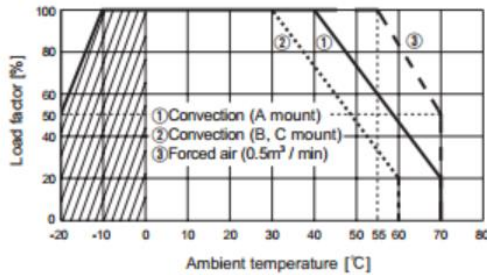


Fig.3.3 Ambient temperature derating curve for PLA100F/150F-12, -15

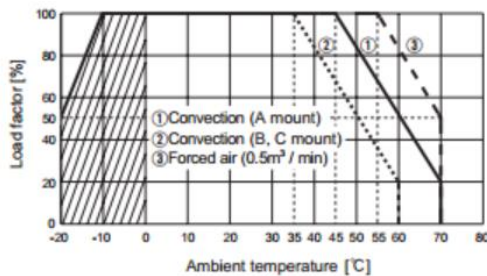


Fig.3.4 Ambient temperature derating curve for PLA100F/150F-24, -36, -48

Mounting Orientation
 A = Unit & connections vertical.
 B = Unit & connections horizontal.
 C = Unit vertical with connections at top

Specifications May Change Without Notice, E&OE. ALL PSU Terms & Conditions apply.

ALL PSU Ltd, Unit D6 Laser Quay, Culpeper Close, Medway City Estate, Rochester, Kent, ME2 4HU, Tel : 01634 725527, Fax : 01634 739111 Email: sales@allpsu.co.uk Web: www.allpsu.co.uk