

100 Watt, RSP-100 Series, Enclosed Power Supply

- Universal AC Input With PFC
- High Efficiency Up To 88%
- High Reliability, 3 Year Warranty
- Short Circuit, Over Voltage, Over Load, Over Temperature Protection
- Full Approvals : UL/CUL/TUV/CB/CE
- Remote ON-OFF Control
- Conformal Coating Option
- Sub 1U Low Profile 30mm



Specification

| | |
|---------------------------------|--|
| Input Voltage..... | .85~264 VAC, 47~63 Hz (120-370 VDC) |
| Power Factor..... | 0.93 @ 230 VAC, 0.98 @ 115 VAC |
| Output Voltage..... | See table below for models and adjustment range |
| Over Load Protection..... | 105~135% O/P Constant Current Limiting |
| Over Voltage Protection..... | Dependant on model, typically 135% |
| Set Up, Rise, Hold Up Time..... | typ 600ms, 30ms, 16ms @ Full Load/230 VAC |
| Remote On/Off..... | 0-0.8 Volts (open) = Output On, Externally supplied 4-10 Volts DC = Output Off |
| Isolation Voltage..... | I/P-O/P: 3.75 kVAC, I/P-FG: 2kVAC, O/P-FG: 0.5kVAC |
| Operating Temperature | -30 to +70 °C, see derating curve |
| Safety Standards..... | UL60950-1 TUV EN60950-1, EN61558-1, EN61558-2-16 CCC GB4943 |
| EMC..... | EN55022, (CISPR22) Class B, EN61000-4-2,3,4,5,6,8,11 EN61000-3-2,3, EN55024, light industry level, criteria A GB9254 class B |
| Mechanical Size & Weight..... | 179 x 99 x 30 mm, 0.44 Kg |
| Connections Input & Output..... | Screw Terminals |

Models and Ratings

| Model | Output Voltage | Output Voltage Adj Range | Maximum Output Current | Efficiency |
|---------------------|----------------|--------------------------|------------------------|------------|
| RSP-100-3.3 | 3.3 Volts | 3.14 to 3.63 Volts | 20 Amps | 83 % |
| RSP-100-5 | 5 Volts | 4.75 to 5.5 Volts | 20 Amps | 86 % |
| RSP-100-7.5 | 7.5 Volts | 7.13 to 8.25 Volts | 13.5 Amps | 87 % |
| RSP-100-12 | 12 Volts | 11.4 to 13.2 Volts | 8.5 Amps | 86 % |
| RSP-100-13.5 | 13.5 Volts | 12.8 to 14.9 Volts | 7.5 Amps | 86.5 % |
| RSP-100-15 | 15 Volts | 14.3 to 16.5 Volts | 6.7 Amps | 87 % |
| RSP-100-24 | 24 Volts | 22.8 to 26.4 Volts | 4.2 Amps | 87 % |
| RSP-100-27 | 27 Volts | 25.7 to 29.7 Volts | 3.8 Amps | 87 % |
| RSP-100-48 | 48 Volts | 45.6 to 52.8 Volts | 2.1 Amps | 88 % |

Please see next page for mechanical drawings, connection details and derating.

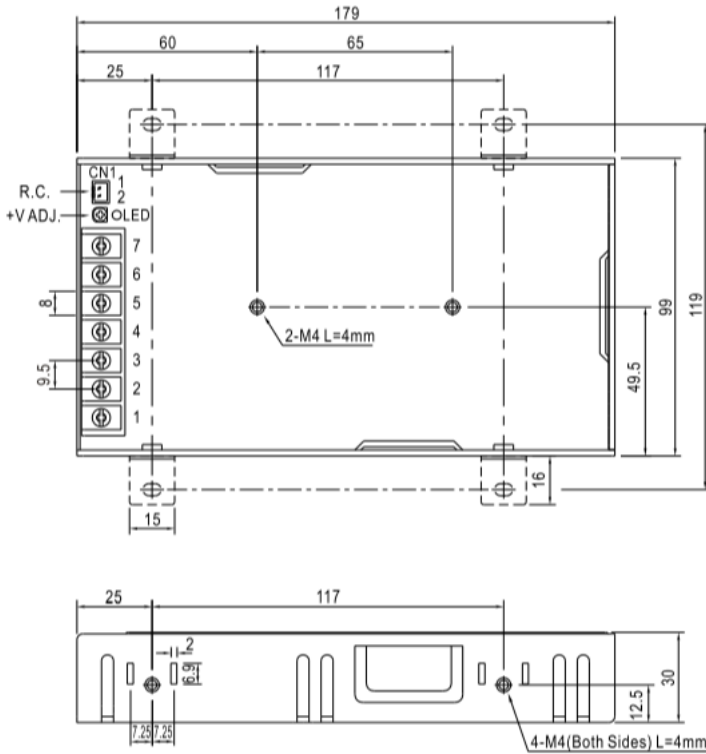
**ALL PSU Ltd, Unit D6 Laser Quay, Culpeper Close, Medway City Estate,
Rochester, Kent, ME2 4HU, Tel : 01634 725527, Fax : 01634 739111
Email : sales@allpsu.co.uk, Web : www.allpsu.co.uk**

100 Watt, RSP-100 Series, Enclosed Power Supply



electronic powersolutions

Mechanical Drawings, (includes 4 x optional side mounting lugs)

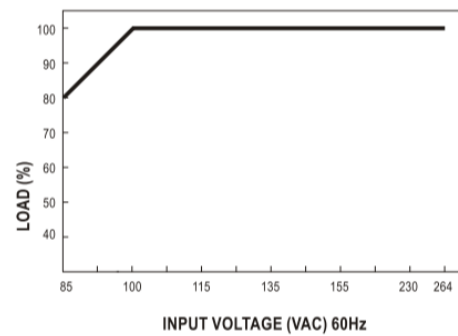
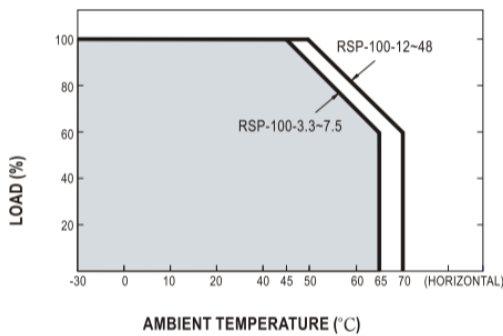


| Connections | |
|-------------|-------------|
| Terminal | Function |
| 1 | AC Live |
| 2 | AC Neutral |
| 3 | Input Earth |
| 4 and 5 | -DC Out |
| 6 and 7 | +DC Out |

Remote ON/OFF (CN1)

| Terminal | Function | Mating Housing | Terminal |
|----------|----------|-----------------------|---------------------------------|
| 1 | RC+ | JST XHP or equivalent | JST SXH-001T-P0.6 or equivalent |
| 2 | RC- | | |

Temperature and AC Input Derating Curves :



Specifications may change without notice. E&OE. ALL PSU Terms & Conditions apply.

**ALL PSU Ltd, Unit D6 Laser Quay, Culpeper Close, Medway City Estate,
Rochester, Kent, ME2 4HU, Tel : 01634 725527, Fax : 01634 739111,
Email : sales@allpsu.co.uk Web : www.allpsu.co.uk**