

240 Watt, SP Series, (Fully Enclosed, Single Output)

ALL PSU LTD
Electronic Power Solutions

- Universal Input with PFC
- High Efficiency, High Reliability
- 100% Full Load Burn In
- Short Circuit, Over Load, Over Voltage, Over Temp Protection
- Full Approvals : UL/CUL/TUV/CB/CE
- 3 Year Warranty
- Built In Temperature Controlled Fan
- DIN Rail Mounting Option



Specification

Input Voltage.....	88~264 VAC, 47~63Hz
Power Factor.....	0.98 @ 115 VAC, 0.95 @ 230 VAC
Output Voltage.....	See table below (plus adjustment range)
Over Load Protection.....	105~135% of output (hiccup mode, auto-recovery)
Over Voltage Protection.....	110~135% of output voltage
Leakage Current.....	<2 mA @ 240 VAC input
Set Up, Rise, Hold Up Time.....	800ms, 50 ms, 20 ms @ 230 VAC
Isolation Voltage.....	I/P-O/P: 3kVAC, I/P-FG:1.5kVAC,
Operating Temperature.....	-20 °C ~+70 °C, see derating curve
Safety Standards.....	UL60950-1, TUV EN60950-1
EMC Standard	EN55022 Class B, EN61000-4-2,3,4,5,6,8,11 EN61000-3-2,3 EN50204, EN55024 Light Industry Level (Criteria A)
Dimensions.....	190(L) x 93(W) x 50(H) mm
MTBF.....	284 khrs (MIL-HDBK-217F) @ 25 °C
Weight.....	0.8 kg each

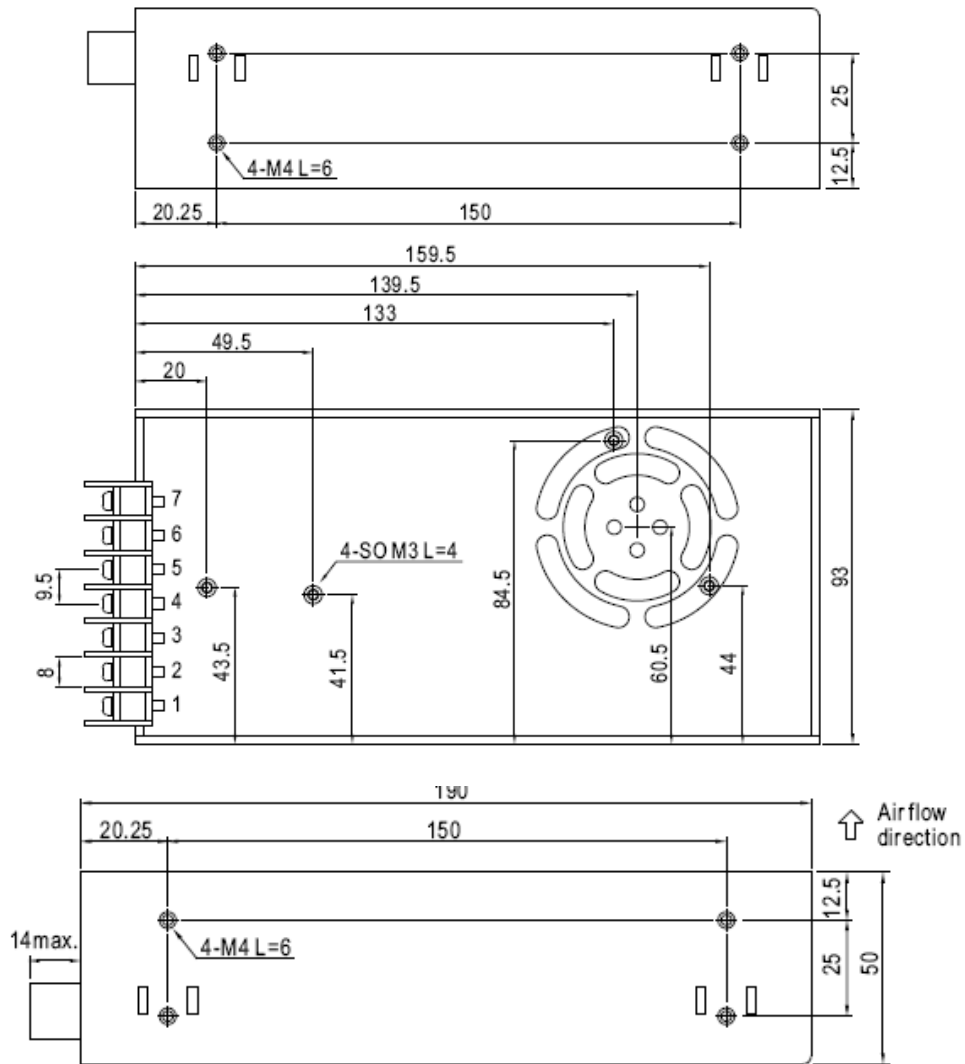
Models and Ratings

Model	Output	Adjustment	Ripple/Noise	Efficiency
SP-240-5	5 V / 45 A	4~6 V	150 mV	79%
SP-240-7.5	7.5 V / 32 A	6~9 V	150 mV	83%
SP-240-12	12 V / 20 A	10~14 V	150 mV	86%
SP-240-15	15 V / 16 A	12~18 V	150 mV	86%
SP-240-24	24 V / 10 A	20~28 V	150 mV	88%
SP-240-30	30 V / 8 A	27~33 V	150 mV	88%
SP-240-48	48 V / 5 A	41~56 V	150 mV	89%

For mechanical / connection details and derating curves see next page

**ALL PSU Ltd, Unit D6 Laser Quay, Culpeper Close, Medway City Estate,
Rochester, Kent, ME2 4HU, Tel : 01634 725527, Fax : 01634 739111,
Email: sales@allpsu.co.uk Web: www.allpsu.co.uk**

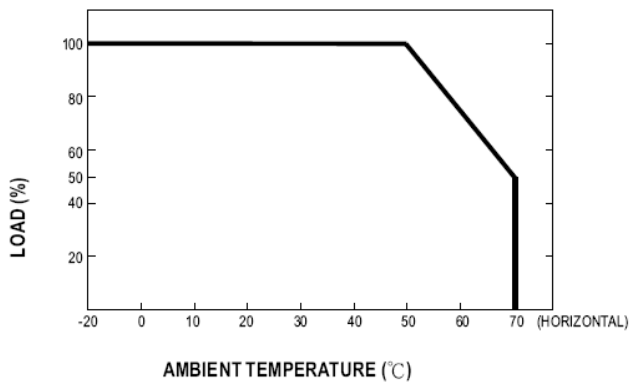
Mechanical Details



Connections

Terminal	Function
1	AC Live
2	AC Neutral
3	F/G
4	-V Out
5	-V Out
6	+V Out
7	+V Out

Temperature Derating Curve



Specifications can change without notice, E&OE. ALL PSU Terms & Conditions apply.

**ALL PSU Ltd, Unit D6 Laser Quay, Culpeper Close, Medway City Estate,
Rochester, Kent, ME2 4HU, Tel : 01634 725527, Fax : 01634 739111,
Email: sales@allpsu.co.uk Web: www.allpsu.co.uk**