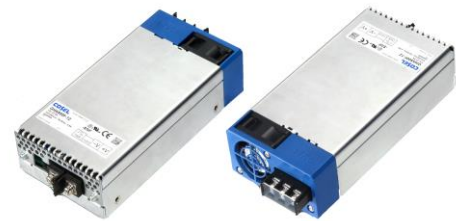




500 Watt, GHA500-SNF Series, Power Supply (Single Output)

- Ultra Compact Foot-Print Only 6.5 x 3.35"
- Only 41mm High – Fits 1U Applications
- Industrial 60950 & Medical 60601 Approvals
- Internal Dual Fuses & Low Leakage Current
- Options include : Remote ON/OFF, 12V AUX, 5V AUX, Power Good Signal & Parallel operation
- Protections : Overcurrent, Overvoltage
- High Efficiency up to 91%
- 5 Year Warranty



Specification (typical values shown)

Input Range.....	90-264 Volts AC
Power Factor.....	0.95 (120 VAC Input) 0.9 (230 VAC Input)
Outputs.....	Single (see table below plus output trim range)
Start Up Time.....	500ms typical (120 VAC Input full load)
Hold Up Time.....	16ms typical (120 VAC Input full load)
Line Regulation.....	0.3% to 0.4% depending on model.
Load Regulation.....	0.4 to 0.8% depending on model.
Efficiency.....	See table below for each model
Over Current Protection.....	above 105% of max output, auto recovery
Isolation Voltage.....	I/P~O/P: 4kVDC
Operating Temperature.....	-20 to +70 °C see derating curve
Storage Temperature.....	-30 to +80 °C
Approvals/EMC.....	UL60950-1, cUL, EN60950-1, EN60601-1 (3 rd) ANSI/AAMI ES60601-1, FCC-B, VCCI-B, CISPR11-B, CISPR22-B, EN55011-B, EN55022-B, IEC61000-3-2 (Class A)
Size.....	85.2 x 41 x 165.3mm
Cooling.....	Internal Fan
Weight.....	660 g Max

Models and Ratings

Model	Output Voltage	Output Trim Range	Max Output Current	Efficiency
GHA500F-12-SNF	12 Volts	10.8~13.2 Volts	37.5 Amps	89 %
GHA500F-15-SNF	15 Volts	13.5~16.5 Volts	33.4 Amps	91 %
GHA500F-24-SNF	24 Volts	21.6~26.4 Volts	21.0 Amps	91 %
GHA500F-30-SNF	30 Volts	27~31.5 Volts	16.7 Amps	91 %
GHA500F-48-SNF	48 Volts	43.2~52.8 Volts	10.5 Amps	91 %
GHA500F-56-SNF	56 Volts	52~56 Volts	9 Amps	91 %

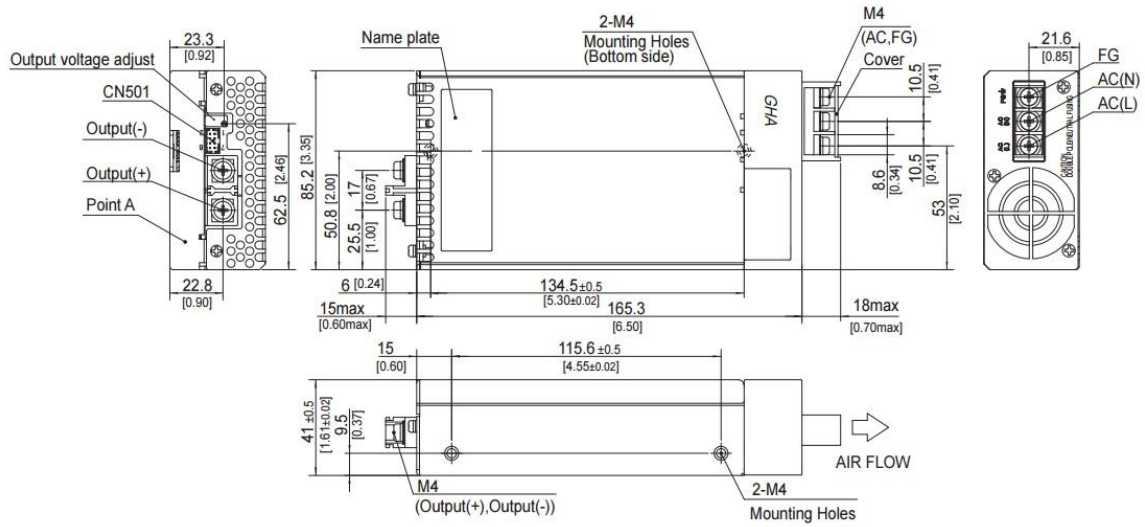
Notes :- J1 Option for JST signals connector (CN501), (Molex type is standard).
 :- P Option for Parallel Operation

Please see next page for Mechanical Drawings, Connections and Derating.

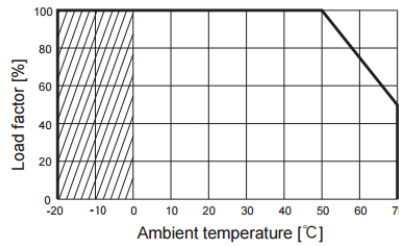
**ALL PSU Ltd, Unit D6 Laser Quay, Culpeper Close, Medway City Estate,
 Rochester, Kent, ME24HU, Tel : 01634 725527, Fax : 01634 739111,
 Email : sales@allpsu.co.uk , Web : www.allpsu.co.uk**

500 Watt, GHA500-SNF Series, Power Supply (Single Output)

Mechanical Details and Connections



Derating curve



Signals Connector	Mating Connector	Terminal (crimps)
CN501 (Molex)	087833-6320	51110-0851
		50394-8051

CN501 Options Connector :

Pin No	Function
1	AUX1 : 12 Volt 0.5 Amp
2	AUX1G : AUX1 (GND)
3	RC : Remote ON/OFF
4	RGC : Remote ON/OFF (GND)
5	PG : Power Good
6	PGG : Power Good (GND)
7	AUX2 : 5 Volt 1 Amp
8	AUX2G : AUX2 (GND)



Specifications may change without notice, E&OE. ALL PSU Terms & Conditions apply

**ALL PSU Ltd, Unit D6 Laser Quay, Culpeper Close, Medway City Estate,
Rochester, Kent, ME2 4HU, Tel : 01634 725527, Fax : 01634 739111
Email : sales@allpsu.co.uk, Web : www.allpsu.co.uk**