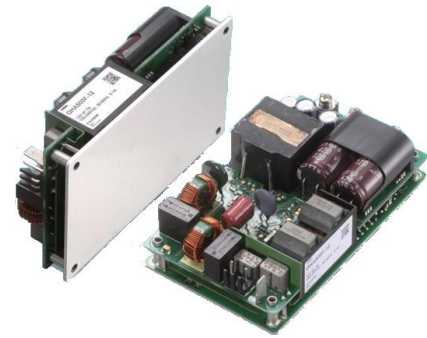




electronic powersolutions

# 500 Watt, GHA500 Series, Power Supply (Single Output)

- 5" x 3" Ultra Compact Foot-Print, Metal Base Plate
- Only 35mm high – fits 1U applications
- Industrial 60950 & Medical 60601 Approvals
- Convection, Conduction or Fan cooled ratings
- Options include : Remote ON/OFF, 12V AUX, 5V AUX, Power Good Signal & Parallel operation
- Protections : Inrush current, Overcurrent, Overvoltage
- High Efficiency up to 92%
- 5 Year Warranty



### Specification (typical values shown)

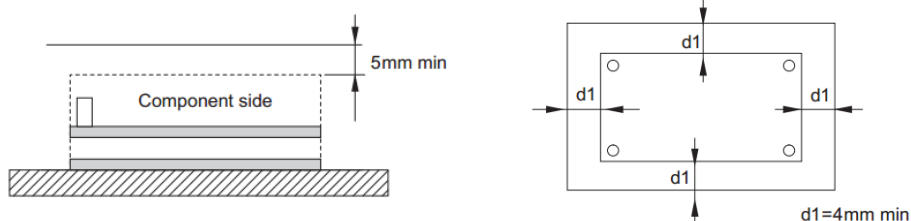
Input Range.....	90-264 Volts AC (130-370 VDC)
Power Factor.....	0.95 (120 VAC Input) 0.9 (230 VAC Input)
Outputs.....	Single (see table below plus output trim range)
Start Up Time.....	500ms typical (120 VAC Input full load)
Hold Up Time.....	16ms typical (120 VAC Input full load)
Line Regulation.....	+/-0.4% max.
Load Regulation.....	+/-0.625% max.
Efficiency.....	See table for each model
Over Current Protection.....	above 105% of nominal max output, auto recovery
Isolation Voltage.....	I/P~O/P: 4kVDC
Operating Temperature.....	-20 to +80 °C see derating curve
Storage Temperature.....	-30 to +80 °C
Approvals/EMC.....	UL60950-1, cUL, EN60950-1, EN60601-1 ANSI/AMII ES60601-1, FCC-B, VCCI-B, CISPR11-B, CISPR22-B, EN55011-B, EN55022-B, IEC61000-3-2 (Class A)
Size.....	127 x 76.2 x 35 mm
Cooling.....	Convection, Conduction or External Fan
Weight.....	420 g Max

### Models and Ratings (Max Output Current ratings are with external fan cooling)

Model	Output Voltage	Output Voltage Trim Range	Max Output Current	Efficiency
<b>GHA500F-12</b>	12 Volts	10.8~13.2 Volts	41.7 Amps	90 %
<b>GHA500F-15</b>	15 Volts	13.5~16.5 Volts	33.4 Amps	92 %
<b>GHA500F-24</b>	24 Volts	21.6~26.4 Volts	21.0 Amps	92 %
<b>GHA500F-48</b>	48 Volts	43.2~52.8 Volts	10.5 Amps	92 %

- Notes :- T3 Option for 4 x Threaded M3 mounting holes, standard unit has through holes  
 :- J1 Option for JST Input and Options connectors, standard unit has Molex connectors  
 :- R3 Option for sub features : remote ON/OFF, 12V AUX, 5V AUX, Power good Signal  
 :- P Option for Parallel Operation

**Mounting instructions :** (allow 5mm above and 4mm around unit for cooling).

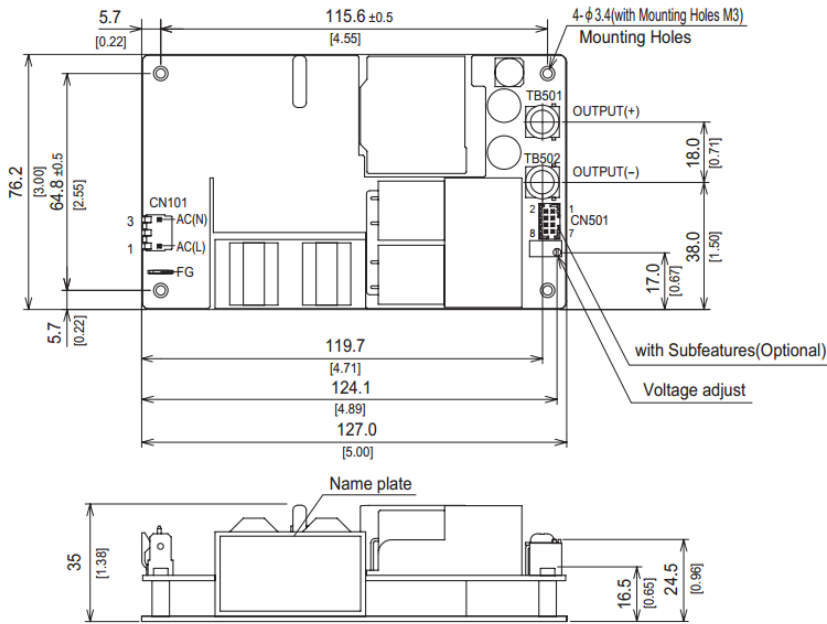




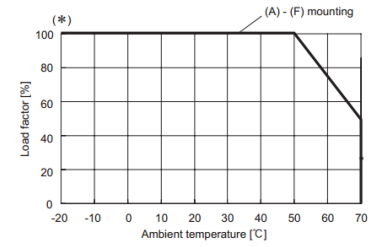
electronic powersolutions

# 500 Watt, GHA500 Series, Power Supply (Single Output)

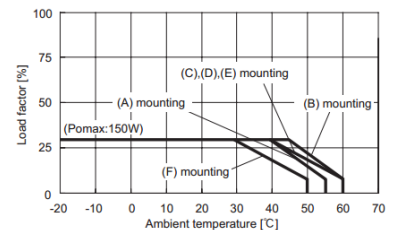
## Mechanical Details and Connections



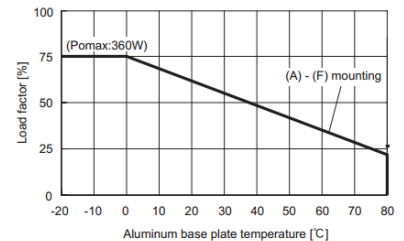
## Derating curves (including mounting positions)



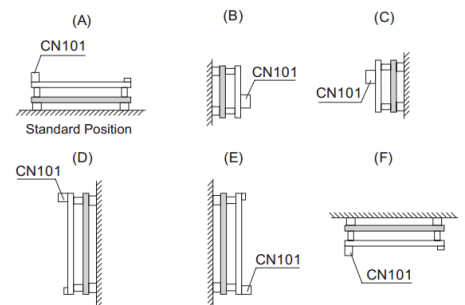
Forced air cooling derating curve  
\*Maximum power with Forced air



Convection cooling derating curve



Conduction cooling derating curve



Mounting method

Input & Options Connector		Mating Connector	Terminal (crimps)	Mfr
CN101	A-41671-A03A197-2	09-50-8031	08-50-0105 08-65-0114	Molex
CN501 (Optional)	087031-0820	51110-0851	50394-8051	
Optional JST connectors (option J1)				
CN101	B2P3-VH	VHR-3N	SVH-21T-P1.1	JST
CN501 (Optional)	B8B-PHDSS	PHDR-08VS	SPHD-002T-P0.5	

GND / Earth Faston Tab	Terminal	Mfr
250 Series	170603-2	Tyco Electronics

### CN501 Options Connector :

Pin No	Function
1	AUX1 : 12 Volt 1 Amp
2	AUX1G : AUX1 (GND)
3	RC1 : Remote ON/OFF
4	RGC : Remote ON/OFF (GND)
5	PG : Power Good
6	PGG : Power Good (GND)
7	AUX2 : 5 Volt 1 Amp
8	AUX2G : AUX2 (GND)

### CN101 AC Input Connector

Pin No.	Function
1	AC Live
2	No Pin
3	AC Neutral

Specifications may change without notice, E&OE. ALL PSU Terms & Conditions apply  
**ALL PSU Ltd, Unit D6 Laser Quay, Culpeper Close, Medway City Estate,**  
**Rochester, Kent, ME2 4HU, Tel : 01634 725527, Fax : 01634 739111**  
**Email : sales@allpsu.co.uk, Web : www.allpsu.co.uk**