



electronicpowersolutions

**150 Watt Medical MAF150 Series, Open Frame / Cased, Single Output**

- Compact 4 x 2" Footprint
- Universal AC Input
- Medical Approvals
- Optional Chassis / Cover
- High Efficiency – up to 92%
- <0.3Watt No Load Input Power
- 5 Year Warranty
- Optional DIN Rail Mounting Kit
- Optional Top Fan Assembly



**Specification**

Input Voltage..... 85~264 VAC, 47~63 Hz (120-370 VDC)  
 Output Voltage..... See table below for output options (+/-10% adjustment range)  
 Output Power ..... 100-110 Watts Convection Cooled / 150 Watts with 10 CFM  
 Over Load Protection..... 115%~150%, Hiccup Mode  
 Over Voltage Protection..... 115%~135% of rated output voltage, Latch Mode  
 Hold Up Time..... 16 ms minimum, full power, 115 VAC input  
 Efficiency..... 91-92% Depending on model  
 Operating Temperature..... -25 °C to +80 °C, see derating curve  
 Storage Temperature..... -40 to +85 °C  
 Isolation..... I/P-O/P: 4 kVAC,  
 Humidity..... 5~95% relative humidity, non-condensing  
 EMC..... EN55011, EN55022, FCC Part 15, Class A/B  
 EN61000-3,2,3, EN61000-4-2,3,4,5,6  
 Safety Approvals..... EN/ES/IEC 60601-1-2, ANSI/AAMI  
 Dimensions ..... 101.6(L) x 50.8(W) x 29.5(H) mm  
 Optional U-Channel Chassis 116.8/(L) x 62(W) x 39.2mm(H)  
 Optional Cover 116.8(L) x 62(W) x 39.2mm(H)  
 Optional Cover with Fan, total height 49.2mm

**Output Models**

Open Frame	U-Channel	Enclosed	Output Voltage	Max Output Current Forced Cooled	Output Current Convection cooled
<a href="#">MAF150US12</a>	<a href="#">MUF150US12</a>	<a href="#">MEF150US12</a>	12 Volts	12.5 Amps	8.33 Amps
<a href="#">MAF150US15</a>	<a href="#">MUF150US15</a>	<a href="#">MEF150US15</a>	15 Volts	10 Amps	7.33 Amps
<a href="#">MAF150US24</a>	<a href="#">MUF150US24</a>	<a href="#">MEF150US24</a>	24 Volts	6.25Amps	4.58 Amps
<a href="#">MAF150US28</a>	<a href="#">MUF150US28</a>	<a href="#">MEF150US28</a>	28 Volts	5.36 Amps	3.92 Amps
<a href="#">MAF150US36</a>	<a href="#">MUF150US36</a>	<a href="#">MEF150US36</a>	36 Volts	4.17 Amps	3.05 Amps
<a href="#">MAF150US48</a>	<a href="#">MUF150US48</a>	<a href="#">MEF150US48</a>	48 Volts	3.13 Amps	2.08 Amps

**ALL PSU LTD**

Unit D6 Laser Quay | Culpeper Close | Medway City Estate | Rochester | Kent  
 ME2 4HU Tel : 01634 725527 | Fax : 01634 739111  
 Email : [sales@allpsu.co.uk](mailto:sales@allpsu.co.uk) | Web : [www.allpsu.co.uk](http://www.allpsu.co.uk)

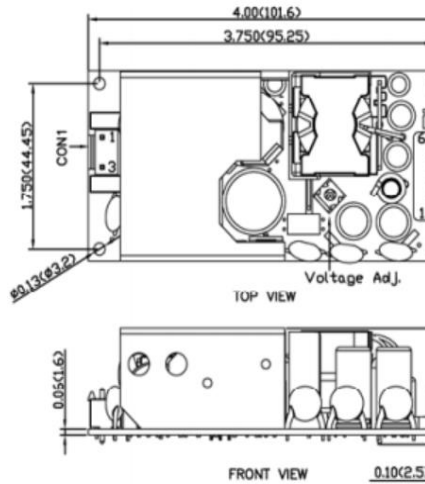


electronic powersolutions

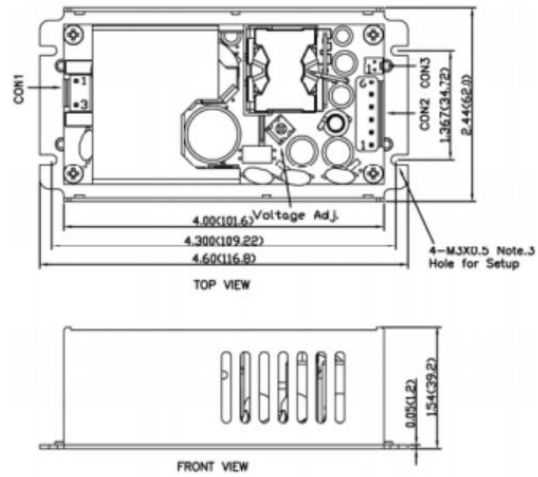
**150 Watt Medical MAF150 Series, Open Frame / Cased, Single Output**

**Mechanical Drawings & Connection Details**

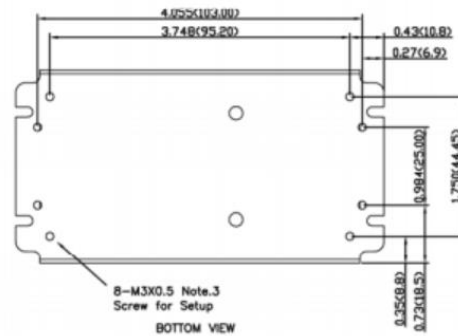
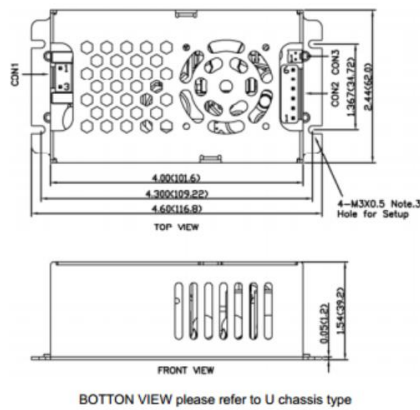
**MAF150 Open Frame**



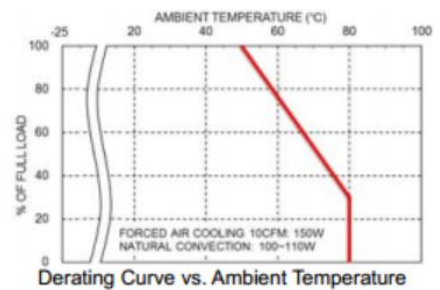
**MUF150 U-Channel Chassis**



**MEF150 Fully Enclosed (without fan)**



CON1 – Input Connector	
Pin 1	Line
Pin 3	Neutral
Mates with JST housing VHR-3N and JST SVH-21T-P1.1 crimp terminals	
Mounting holes marked with ⊕ must be connected to safety earth for CLASS I application	
CON2 – Output Connector	
Pin 1,2,3	-Vout
Pin 4,5,6	+Vout
Mates with JST housing VHR-6N and JST SVH-21T-P1.1 crimp terminals	
CON3 – Fan Connector	
Pin 1	-Fan
Pin 2	+Fan
Mates with Molex housing 22-01-1022 and 2759 crimp terminals	



Specifications are subject to change without notice, E&OE. ALL PSU Terms & Conditions apply.

**ALL PSU LTD**

Unit D6 Laser Quay | Culpeper Close | Medway City Estate | Rochester | Kent  
 ME2 4HU Tel : 01634 725527 | Fax : 01634 739111  
 Email : [sales@allpsu.co.uk](mailto:sales@allpsu.co.uk) | Web : [www.allpsu.co.uk](http://www.allpsu.co.uk)