

ALL PSU DATA SHEET.

300 Watt, Encapsulated Step Down Converter SV15A

- * Output Power 300 Watts
- * Non Isolated Step Down Converter
- * High Reliability, MTBF > 500 K Hrs
- * Screw Terminals
- * Efficiency Up To 95%
- * Short Circuit Protection
- * Output Good LED
- * Ideal For Fixed Or Mobile Applications, Sealed & Rugged IP68 Construction.
- * Remote On/Off Facility.



STANDARD MODELS, (Other Input / Output Versions Are Available).

Input Voltage Order Code	1	2	3	
Input Range	9-18V	18- 72V	77-130V	
Output Power	Max. 300W			
Output Voltage Order Code	1	2	3	4
Output Voltage	5V	12V	15V	24V
Maximum Output Current	15A	13A	13A	12A
Accuracy	Typ.1%			
Other Input Voltages	On Request			
Other Output Voltages	On Request			

Note : As A Step Down Converter
The DC Input Voltage Must Be At Least 3V Above The Output Voltage Required.

Specification

(after warm-up time at 25° C)

Regulation	
- Load Variation 0 – 100 % static	typ. $\leq \pm 0.3%$ (max. 0.5%)
dynamic	typ. $\leq \pm 1.0%$ (max. 2.0%)
- Input Voltage Variation $\pm 25%$	typ. $\leq \pm 0.2%$ (max. 0.5%)
- Recovery Time To $\pm 1%$	typ. 0.50ms (max. 1ms)
- Ripple & Noise	$< 1% V_{Nom}$
- Switching Component	typ. 100 mV pp
- Efficiency @ Full Load	
24V output	$\geq 94 %$
5V output	$\geq 87 %$
- Input Current With No Load	ca. 25mA
- Storage Temperature Range	-40°C...+125°C
- Operating Temperature Range	-40°C...+125°C
- Op. Temp. Range @ Full Load	-40°C...+85°C
- Derating Above 85°	2.5 % / °C
- Temperature Coefficient	$< 0.05 % / °C$

ALL PSU Ltd, Unit D6 Laser Quay, Culpeper Close, Medway City Estate,
Rochester, Kent, ME2 4HU, Tel : 01634 725527, Fax : 01634 739111,
Email : sales@allpsu.co.uk Web : www.allpsu.co.uk

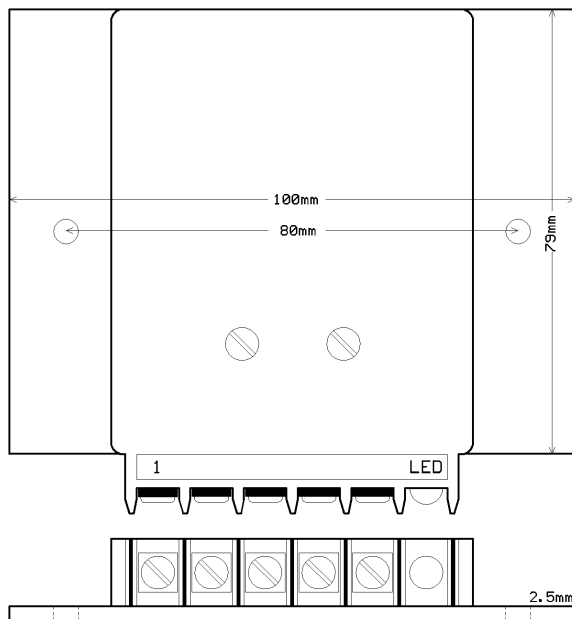
ALL PSU DATA SHEET.

Cont ... 300 Watt, Encapsulated Step Down Converter, SV15A.

Page 2 of 2

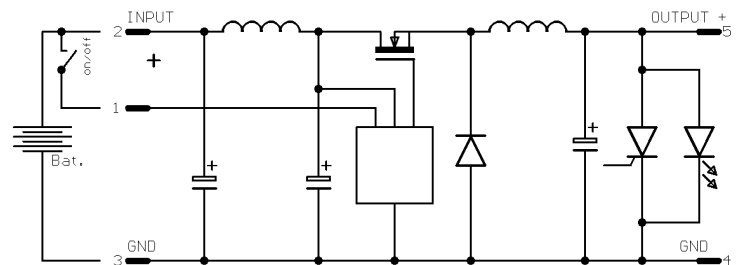
- Humidity	100 % RH
- MTBF(constant failure period)	> 500 K Hrs
Switching Frequency	ca./approx. 120 kHz.
Short Circuit Protection By Current limit	
- Calibrated At The Factory @	ca. 110...120% I_{nom}
Overvoltage Protection	
- For 5V types	ca. 6,5V
- For 12V types	ca. 16 V
- For 15V types	ca. 19 V
- For 24V types	ca. 28 V
(only without OVP for battery chargers)	Specials On Request

Mechanical Drawing



Dimensions, 100 x 90 x 18mm
Weight , 200g

Circuit Block Diagram



Part Number Order Example

SV15A - 2 4

SV15A = Series Type
2 = Input Voltage (18-72VDC)
3 = Output Voltage (24 V)

Specifications May Change Without Notice, E&OE.

*Other Input / Output Versions Are Available On Request.
Further Units In This Series Are Available With Isolated Outputs From 40 To 120 Watts,
And Non Isolated Outputs To 600 Watts.*

*Full Details Of These And Other Converter Or Power Supply Products Can Be Seen At
www.allpsu.co.uk*

ALL PSU Ltd, Unit D6 Laser Quay, Culpeper Close, Medway City Estate,
Rochester, Kent, ME2 4HU, Tel : 01634 725527, Fax : 01634 739111,
Email : sales@allpsu.co.uk Web : www.allpsu.co.uk