

ALL PSU DATA SHEETS.

400 Watt Encapsulated Step Up Converter, SV3401 Series.

- high reliability
 MTBF > 300 K Hrs
- Cold Wall Mount With Screw Terminals
- Efficiency Up To 95 %
- Short Circuit Protection
- Step-Up Technology Non Isolated.



STANDARD MODELS (Non standard input or output options may be available).

DC Input Order Code	2	4
Input Range	9 – 18 VDC	18 – 32 VDC
Output Power	Max. 400W	
Output Voltage Order Code	4	5
Output Voltage	24V	48V
Output Current	16A	8A
Output Voltage Accuracy	Typ.1%	
Other Input Voltages	On Request	
Other Output Voltages	On Request	

As A Step Up Converter, V Out => V In.

Specification

(after warm-up time at 25° C)

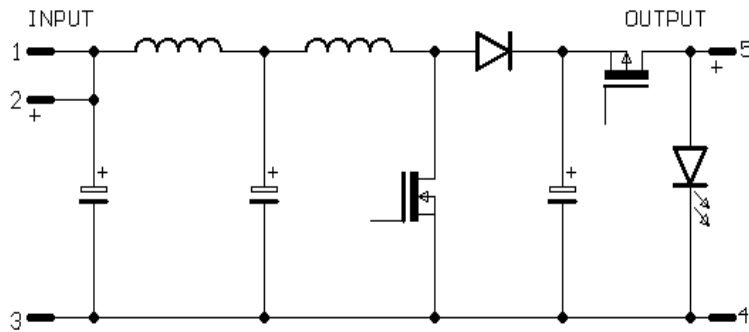
Regulation	
- Load Variation 0 – 90 % static	typ $\leq \pm 0.5\%$ (max 1.0 %)
dynamic	typ $\leq \pm 1.0\%$ (max 2.0 %)
- Input Voltage Variation $\pm 10\%$	typ $\leq \pm 0.2\%$ (max 0.5 %)
- Recovery Time to $\pm 1\%$	typ 50ms (max 100 ms)
- Ripple And Noise	$< 1\% V_{Nenn}$
- Efficiency @ 24V Input	$\geq 93\%$ / @ 36 V Input & Output
	$\geq 90\%$ / @ 48 V Input & Output
- Storage Temperature Range	-40°C...+125°C
- Operating Temperature Range	-10°C...+125°C
- Derating Above 105°C	5 % / °C
- Temperature Coefficient	$< 0.01\%$ / °C
- Humidity	100 % RH
- MTBF(constant failure period)	> 300 K Hrs
- Switching Frequency	ca./approx. 100 KHz.
- Short Circuit Protection By	Switch Off

ALL PSU DATA SHEET.

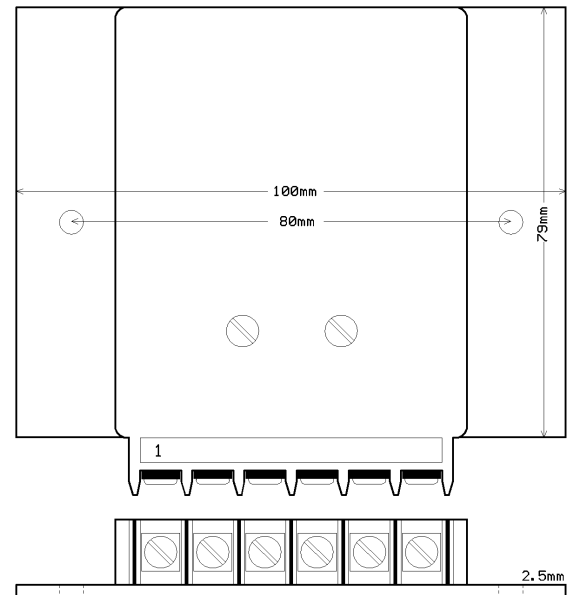
Cont... 400 Watt Encapsulated Step Up Converter, SV3401 Series.

Page 2 of 2

Circuit Block Diagram



Mechanical Drawing



Part Number System

SV3401 – X Y

Series SV3401

X = Input Voltage Code

Y = Output Voltage Code

Connections

Terminal 1 And 2 = + Volts Input

Terminal 3 And 4 = 0 Volt / Ground

Terminal 5 = + Volts Output

Terminal 6 = Output Good LED.

Overall Dimensions In mm

100 x 79 x 15 mm

(Base Plate Is Aluminium
And Should Be Fitted To A
Suitable Cold Wall).

*Other Units In This Series Are Available From 40 To 120 Watts With Isolated Outputs,
And Up To 600 Watts Non Isolated.*

*For More Information On These Or Other Power Products Please Contact The ALL PSU
Sales Office Or Visit Our Web Site At www.allpsu.co.uk*

ALL PSU Ltd, Unit D6 Laser Quay, Culpeper Close, Medway City Estate,
Rochester, Kent, ME2 4HU, Tel : 01634 725527, Fax : 01634 739111
Email : sales@allpsu.co.uk, Web : www.allpsu.co.uk