

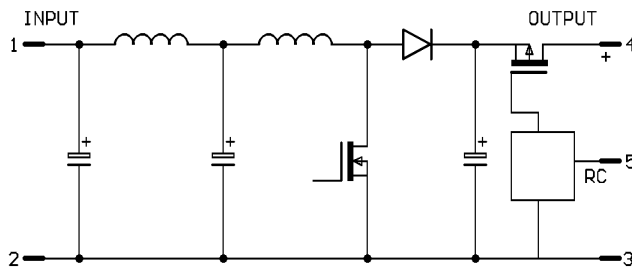


# ALL PSU DATA SHEET.

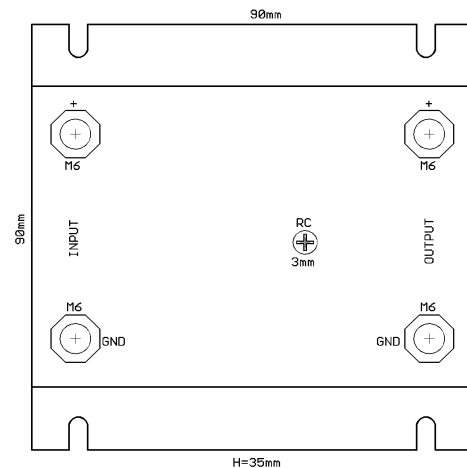
Cont ... 600 Watt Encapsulated Step Up Converter, SV3601 Series.

Page 2 of 2.

## Circuit Block Diagram



## Mechanical Drawing



Dimensions 90 x 90 x 35 mm

Part Number System

SV3601 - X Y

Series SV3601

X = Input Voltage Code.

Y = Output Voltage Code.

As A Step Converter The Output Voltage Is Higher Than The Input Voltage.

*Other Units In this Series Are Available From 40 to 120 Watts With Isolated Outputs, And From 120 To 600 Watts Non Isolated.*

*For More Information On This Or Other Products Please Contact The ALL PSU Sales Office.*

ALL PSU Ltd, Unit D6 Laser Quay, Culpeper Close, Medway City Estate,  
Rochester, Kent, ME2 4HU, Tel : 01634 725527, Fax : 01634 739111,  
Email : [sales@allpsu.co.uk](mailto:sales@allpsu.co.uk) , Web : [www.allpsu.co.uk](http://www.allpsu.co.uk)