

160 Watt, PSC-160 Series, Battery Back Up Power Supply



- Universal AC Input
- 6"X 3" Compact Open Frame Size
- Battery Low Protection / Battery Reverse polarity protection by fuse
- Short Circuit, Over Voltage, Over Load Protected
- Convection Cooled To Full Power
- Alarm Relay Signal AC OK & Battery Low
- Full Approvals: UL/EN/CE
- Optional Covers & Connector Kits



Specification

Input Voltage.....	90~264 VAC, 47~63 Hz (127-370 VDC)
Inrush Current.....	35 A @ 115 VAC, 70 A @ 230 VAC
Output Voltage.....	See table below, Main O/P to Load + Float Charger O/P
Output Voltage Adjustment.....	O/P 1 (12-15 Volts) or (24-29 Volts) O/P 2 Tracks O/P 1
Load Regulation.....	+/-0.5%
Line Regulation.....	+/-0.5%
Over Voltage Protection.....	PSC-160A O/P 1 : 14.49~18.63V, PSC-160B O/P 1 : 28.98~37.26V
Overload Protection.....	105~150% hiccup mode, auto recovery.
Battery Cut Off.....	PSC-160A 10 Volts (+/-0.5V), PSC-160B 20 Volts (+/-1V)
AC OK Alarm.....	Relay contact output, ON = AC OK, OFF = AC Fail
Battery Low Alarm.....	Relay contact output, ON = Battery Low (<11v / <22V) OFF = Battery OK
Hold Up Time.....	40 ms, min @ full load 230 VAC
Input to Output Isolation.....	I/P-O/P: 3 kVAC,
Operating Temperature	-20 to +70 °C, see derating curve
Storage Temperature.....	-25 to +85 °C
Safety Standards.....	UL60950-1 TUV EN60950-1, CE
EMC.....	EN55022 (CISPR22) class B, EN55024, EN61000-3-2,3, EN61000-4-2,3,4,5,6,8,11, light industrial level criteria A
MTBF.....	257K Hours, MIL-HDKB-217F @ 25°C
Mechanical	152.4 x 76.2 x 32 mm (standard open frame unit)
Connections Input & Output.....	JST Plug In Connections (connector kits available from ALL PSU)

Models and Ratings (Output 1 to Load, Output 2 Battery Float Charger).

Model	Output 1	Output 2	Battery Voltage
PSC-160A	13.8 Volts / 11.6 Amps	13.8 Volts / 4 Amps	12 Volts
PSC-160B	27.6 Volts / 5.8 Amps	27.6 Volts / 2 Amps	24 Volts

Notes :

- 1) The above units can supply a maximum of 160 Watts total power, therefore if battery charge current drawn is lower than maximum then more power can be taken from output 1 to the load, up to 100% of total rating.
- 2) Units include auto switchover circuit to power load from battery in the event of AC mains failure.
- 3) Units include alarm signals for AC OK and Battery Low

Please see next page for mechanical drawings.

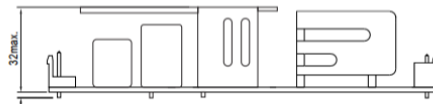
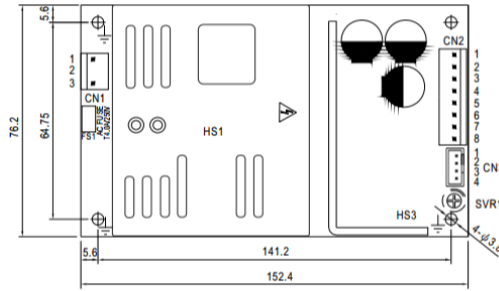
**ALL PSU Ltd, Unit D6 Laser Quay, Culpeper Close, Medway City Estate,
Rochester, Kent, ME2 4HU, Tel : 01634 725527, Fax : 01634 739111
Email : sales@allpsu.co.uk, Web : www.allpsu.co.uk**

160 Watt, PSC-160 Series, Battery Back Up Power Supply



electronicsolutions

Mechanical Drawings & Connections.



- 1.HS1.HS3 can not be shorted.
- 2.HS1.HS3 must have safety isolation distance with system case.
- ⚡.Grounding required

AC Input Connector (CN1) : JST B3P-VH or Equivalent

PIN No	Assignment	Mating Housing	Terminal
1	AC Neutral	JST VHR or Equivalent	JST SVH-21T-P1.1 or Equivalent
2	No Pin		
3	AC Live		

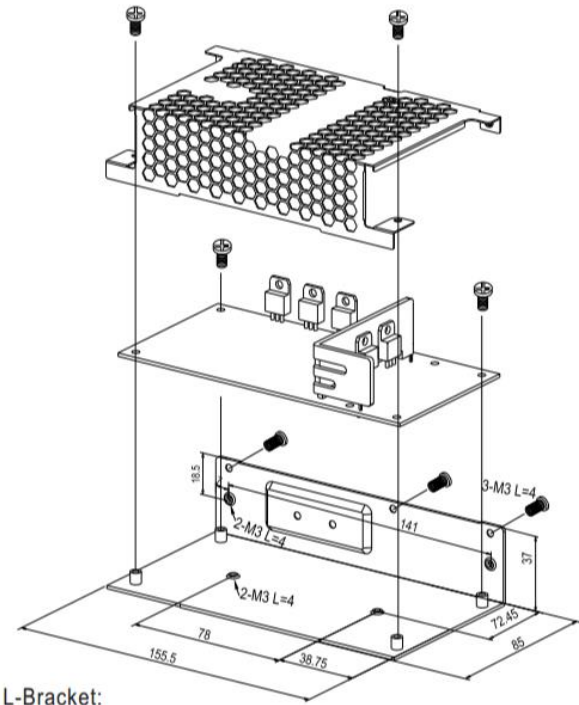
DC Output Connector (CN2) : JST B8P-VH or Equivalent

PIN No	Assignment	PIN No	Assignment	Mating Housing	Terminal
1,2	-V out	5,6	Battery +	JST VHR or Equivalent	JST SVH-21T-P1.1 or Equivalent
3,4	+V out	7,8	Battery -		

Alarm Output Connector (CN3) : JST B4B-XH or Equivalent

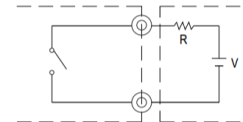
Pin No	Assignment	Mating Housing	Terminal	Description
1 2	AC OK	JST VHR or Equivalent	JST SVH-21T-P1.1 or Equivalent	The signal is Low when AC present and turns High when AC Fails
3 4	Battery Low			The signal is Low when Battery Voltage is under 11 Volts / 22 Volts and turns High when Battery Voltage above these levels.

Cover:
No.231A-T



L-Bracket:
No.231A-D

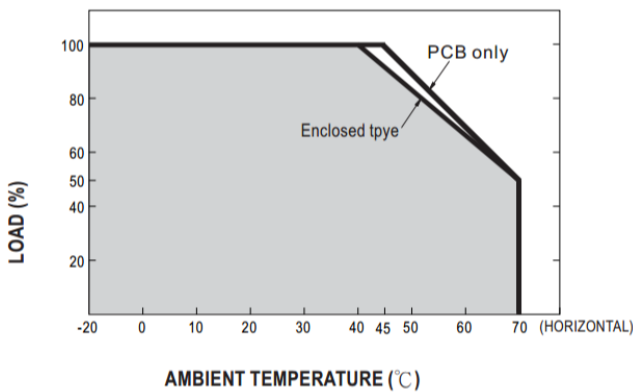
AC OK (Battery low)
CN3 Pin1 (Pin3)



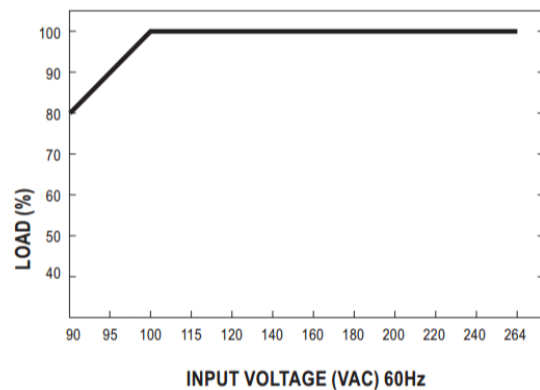
CN3 Pin2(Pin4)

External voltage source (V) and resistor (R)
(The max. Sink is 1A and 30V)

Output Derating



Output Derating VS Input Voltage



Specifications may change without notice. E&OE. ALL PSU Terms & Conditions apply.

**ALL PSU Ltd, Unit D6 Laser Quay, Culpeper Close, Medway City Estate,
Rochester, Kent, ME2 4HU, Tel : 01634 725527, Fax : 01634 739111,
Email : sales@allpsu.co.uk Web : www.allpsu.co.uk**