

30 Watt, PSD30 Series, Open Frame DC-DC Converter

ALL PSU LTD
Electronic Power Solutions

- DC Inputs From 9 to 72 V
- 1500 Volts Isolated Output
- Low Ripple, Built In Filter
- Protections, Short Circuit, Over Load, Over Voltage, Reverse Polarity.
- High Reliability
- Cooling By Free Air Convection
- CE Marked

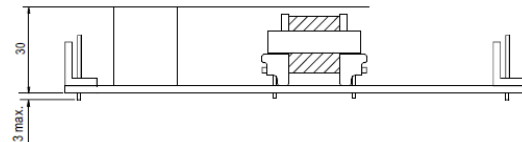
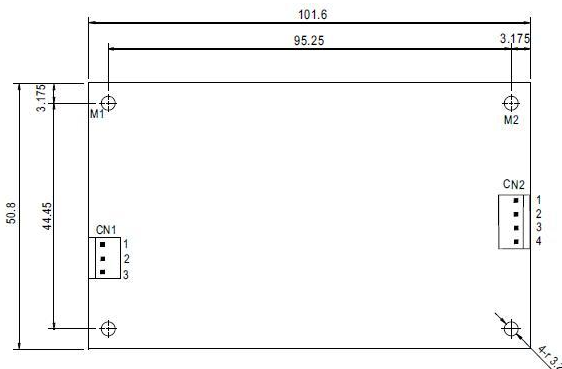


Size: 101.6 x 50.8 x 30 mm

Specification

Input Voltage.....	See table below, inputs from 9~72 VDC
Output Voltage.....	See table below (plus adjustment)
Output Tolerance.....	+/-1% (5V = +/-2%) includes set up, line & load regulation
Line & Load Regulation.....	+/-1% (max)
Over Load Protection.....	105~150% Hiccup Mode, (auto-recovery)
Over Voltage Protection.....	115 to 135% of rated output voltage
Isolation Voltage.....	1.5 kVAC (input to output)
Operating Temperature.....	-20~+55°C, (derate below -10°C & above +40/45°C)
Safety Standards.....	Meets LVD requirements, CE marked
EMC Standards.....	EN55022 (CISPR22) class B, EN61000-4-2,3,4,6,8, EN55024, EN55024, Light industrial level, criteria A
Mechanical Size.....	101.6(L) x 50.8(W) x 30(H) mm
Connections.....	Input & output JST VHR Plug in

Model	Input Voltage	Output Voltage / Current	Output Voltage Adjustment	Efficiency
PSD-30A-05	9~18 VDC	5 V / 5 A	4.5 to 5.5 V	77%
PSD-30A-12	9~18 VDC	12 V / 2.5 A	11 to 13.5 V	77%
PSD-30A-24	9~18 VDC	24 V / 1.25 A	22 to 26 V	78%
PSD-30B-05	18~36 VDC	5 V / 5 A	4.5 to 5.5 V	79%
PSD-30B-12	18~36 VDC	12 V / 2.5 A	11 to 13.5 V	80%
PSD-30B-24	18~36 VDC	24 V / 1.25 A	22 to 26 V	83%
PSD-30C-05	36~72 VDC	5 V / 5 A	4.5 to 5.5 V	80%
PSD-30C-12	36~72 VDC	12 V / 2.5 A	11 to 13.5 V	82%
PSD-30C-24	36~72 VDC	24 V / 1.25 A	22 to 26 V	83%



Pin No (CN1)	Assignment	Pin No (CN2)	Assignment
1	-V in	1,2	+V out
2	N/C	3,4	-V out
3	+V in		

Specifications may change without notice, E&OE. ALL PSU Terms & Conditions apply.

**ALL PSU Ltd, Unit D6 Laser Quay, Culpeper Close, Medway City Estate,
Rochester, Kent, ME2 4HU, Tel: 01634 725527, Fax: 01634 739111
Email: sales@allpsu.co.uk Web: www.allpsu.co.uk**