

15 Watt, DR Series, DIN Rail Mounting Power Supply

ALL PSU LTD
Electronic Power Solutions

- Universal AC Input
- High Efficiency, High Reliability
- Wide Temperature Range
- Cooling By Free Air Convection
- Power on LED, Output Voltage Trim
- Short Circuit, Overload, and Over Voltage Protection
- Compact Size, Light Weight
- Full Approvals: UL/cUL/TUV/CE/CB
- Very Competitively Priced



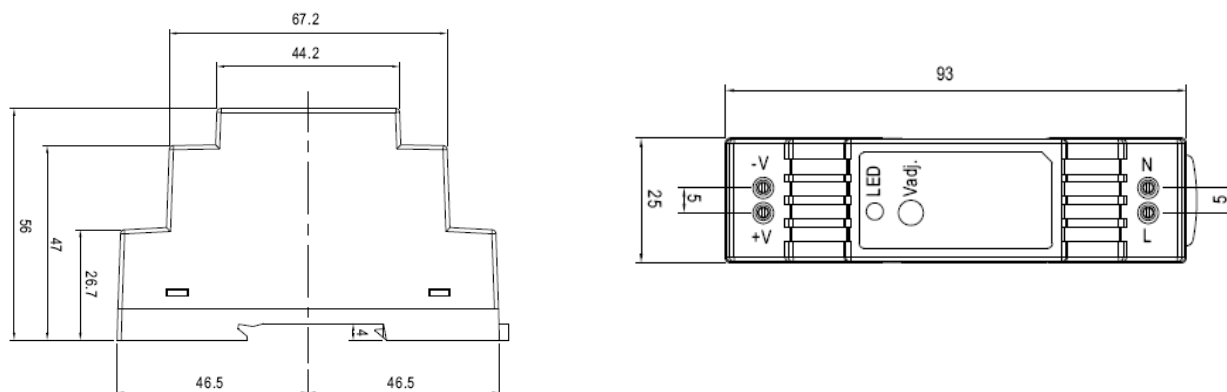
Specification

Input Voltage.....	85~264 VAC, (120~370 VDC)
Input Frequency.....	47~63 Hz
Inrush Current.....	Cold start, 35A @ 115VAC, 65A @ 230 VAC
Output Voltage.....	See table below (plus adjustment range)
Overload Protection.....	105~160% (constant current limiting auto recovery)
Overvoltage Protection.....	115~135% of output voltage
Setup, Rise, Hold-Up Time.....	1000 ms, 50 ms, 70 ms @ 230 VAC (full load)
Isolation.....	I/P-O/P: 3 kVAC
Operating Temperature.....	-20 ~ +60 °C (derates above 50 °C to 80% load)
Safety Standards.....	UL60950-1, TUV EN60950-1, design refer to EN50178
EMC Standards.....	EN55011, EN55022 Class B, EN61000-3-2, 3 EN61000-4-2, 3, 4, 5, 6, 8, 11, ENV50204, EN55024 EN61000-6-2, EN61204-3 Heavy industry level Criteria A
MTBF.....	1172.3 khrs (MIL-HDBK-217F) @ 25 °C
Weight.....	0.1 kg

Models and Ratings

Model	Output Volts / Amps	Output Voltage Trim Range	Ripple/Noise	Efficiency
DR-15-5	5.0 V / 0~2.4 A	4.75 V ~ 5.5 V	80 mV	77%
DR-15-12	12.0 V / 0~1.25 A	10.8 V ~ 13.2 V	120 mV	84%
DR-15-15	15.0 V / 0~1 A	13.5 V ~ 16.5 V	120 mV	83.5%
DR-15-24	24.0 V / 0~0.63 A	21.6 V ~ 26.4 V	150 mV	85%

Mechanical Details



Specifications can change without notice. E&OE. ALL PSU Terms & Conditions apply

**ALL PSU Ltd, Unit D6 Laser Quay, Culpeper Close, Medway City Estate,
Rochester, Kent, ME2 4HU, Tel : 01634 725527, Fax : 01634 739111
Email: sales@allpsu.co.uk, Web: www.allpsu.co.uk**