

- Suitable For Dual / N+1 Redundant Operation Of A 24Volt Power Supply System
- Can Be Installed on DIN Rail TS35 / 7.5 or 15
- Relay Contact Signal Output And LED Indicator For Input Failure Alarm
- Cooling By Free Air Convection
- 3 Years Warranty



The DR-RDN20 is a 20 Amp redundancy (decoupling) module for the 24 VDC power system. Containing 2 sets of 20 Amp Or-ing diodes with excellent heat dissipation. The DR-RDN20 offers a safe 1+1 redundant set-up. Not only to perfectly decouple power sources from each other as well as from the load, DR-RDN-20 also provides users monitoring signals for both input channels through the built-in relays.

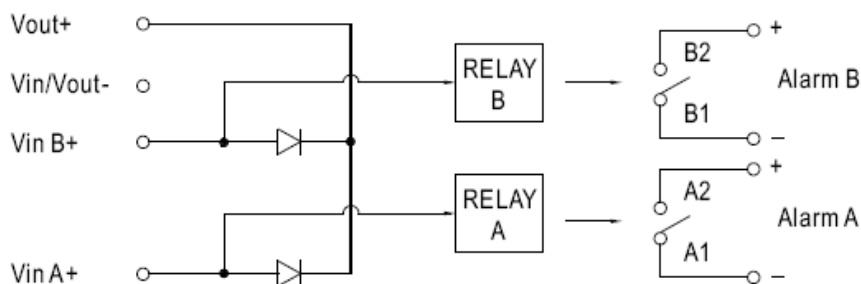
Specification

Input Voltage Range.....	21 ~ 28 Volts
Number Of Inputs.....	2
Input Current (max).....	20 Amps per input
Reverse Voltage.....	30 Volts max
Output Current (max).....	20 Amps
Voltage Drop.....	0.5 Volts
LED Indicators.....	Two Green LEDs indicating each input is 'OK or Fail'
Input Voltage Alarm.....	When Input is >20 V(+/-5%) or <30 V (+/-5%) relay contacts
Relay Contact Rating.....	30 VDC, 1A
Working Temperature.....	-20°C ~ +70°C
EMC Standards.....	EN55022 class B, EN61000-4-2,3,4,5,6,8, ENV50204
Connections.....	I/P: 4 Poles, O/P: 2 Poles Screw DIN Terminal
Weight.....	0.5 kg
Dimensions.....	55.5(W) x 125.2(H) x 100(D) mm

Model and Ratings

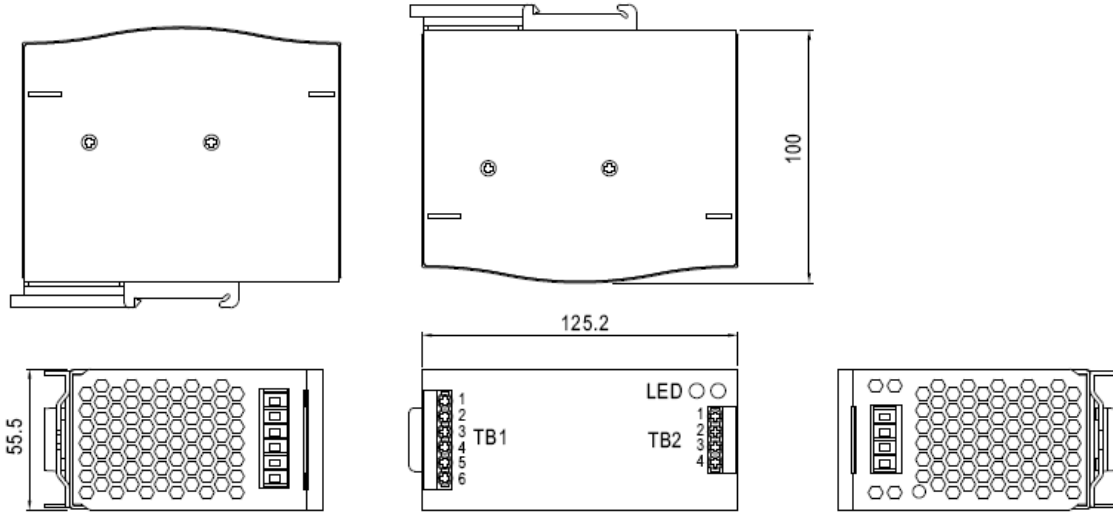
Model	Output	Reverse Voltage	Current
DR-RDN20	24 V / 20 A	30 V max	20 A max

Relay Alarm Block Diagram



Power Supply Redundant Module, DIN Rail Mounting

Mechanical Details



Terminal TB1

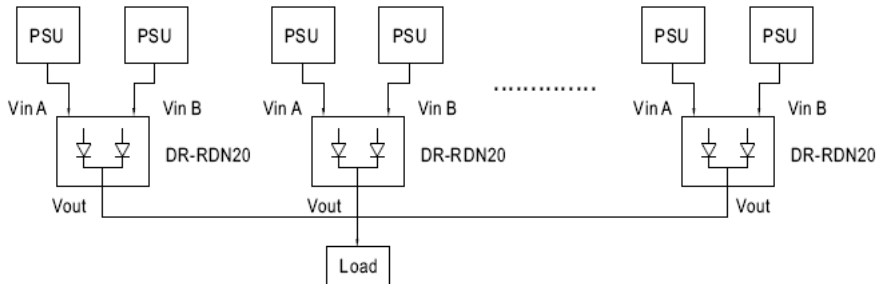
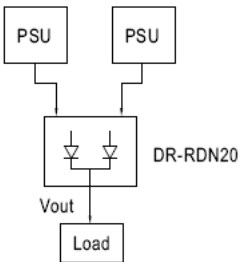
Terminal	Assignment
1	+ Vout
2	- Vout
3,4	-Vin
5	Vin B+
6	Vin A+

Terminal TB2

Terminal	Assignment
1	Alarm B1
2	Alarm B2
3	Alarm A1
4	Alarm A2

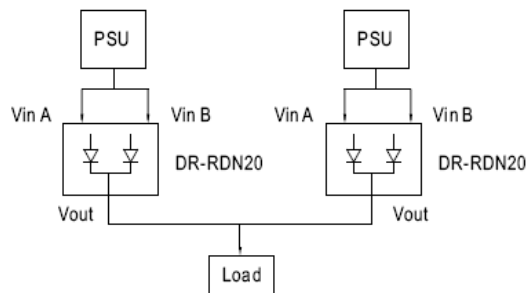
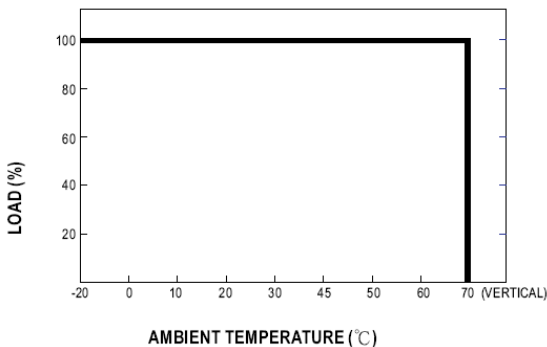
1+1 Redundant
Using 1 more PSU as the redundant unit:

1+N Redundancy: Using more PSUs as the redundant units to increase reliability



Single Use : Connecting only one PSU to one DR-RDN20 to reduce the stress on the diodes and hence increase the reliability

Derating Curve



Specifications can change without notice. E&OE. ALL PSU Terms & Conditions apply.