

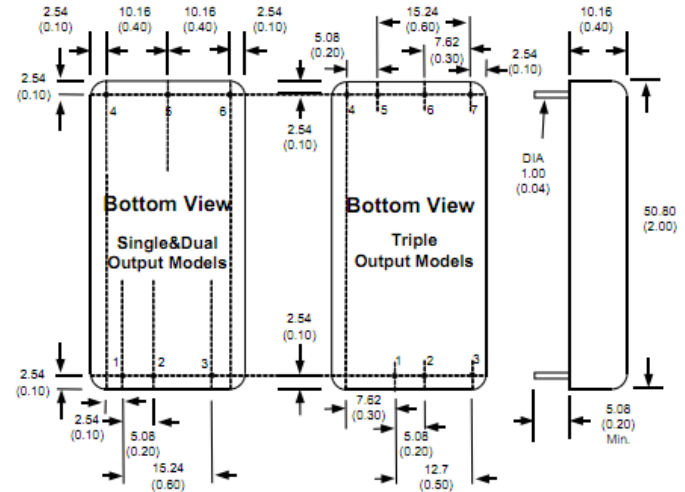


Model (9-36V input)	Model (18-75V input)	Output 1	Outputs 2 & 3	Output Current	Efficiency
<b>Triple Output Units</b>					
ETW30-24S3R3D12	ETW30-48S3R3D12	3.3 V	+/-12 V	5000/±420 mA*	89%
ETW30-24S3R3D15	ETW30-48S3R3D15	3.3 V	+/-15 V	5000/±330 mA*	89%
ETW30-24S5D12	ETW30-48S5D12	5.0 V	+/-12 V	4000/±420 mA*	89~90%
ETW30-24S5D15	ETW30-48S5D15	5.0 V	+/-15 V	4000/±330 mA*	90~91%

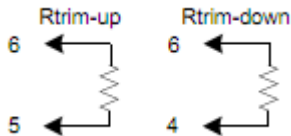
\*Requires 10% minimum load on each output,

## Mechanical Details and Pin-Out

Pin	Function Single O/P	Function Dual O/P	Function Triple O/P
1	+V in	+V in	+V in
2	-V in	-V in	-V in
3	CTRL	CTRL	CTRL
4	+V out	+V out	+Aux
5	-V out	Com	-Aux
6	Trim	-V out	Com
7	No Pin	No Pin	+V out



Output voltage can be trimmed by +/- 10% using the method shown below.  
(Single output models only)



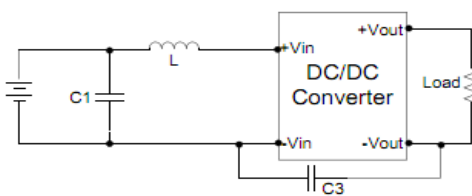
### Remote on/off (CTRL) (6)

On: 3~12Vdc or open circuit  
Off: 0~1.2Vdc or short pins 2 & 3  
Off idle current: 5 mA (typical)

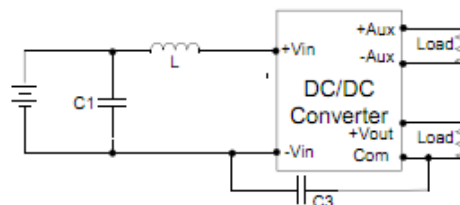
### Notes:

The remote on/off pin is referenced to -V in (Pin 2).  
The input filter components (C1, C3 & L) are used to help meet conducted emission requirements and should be mounted as close as possible to the module and lead lengths minimised.  
An external filter capacitor is required if the module has to meet EN61000-4-4 and EN61000-4-5  
Suggested filter capacitor: Nippon chemi-con KY series 220 uF/100 V

### Input Filter



Single & Dual Outputs



Triple Outputs

Model	C1	L	C3
ETW30-12xxxxx	100uF/100V	12 uH	1206,470PF,2KV
ETW30-24xxxxx	100uF/100V	12 uH	1206,470PF,2KV
ETW30-48xxxxx	100uF/100V	12 uH	1206,470PF,2KV

Specifications may change without notice, E&OE. ALL PSU Terms & Conditions apply.

**ALL PSU Ltd, Unit D6 Laser Quay, Culpeper Close, Medway City Estate,  
Rochester, Kent, ME2 4HU, Tel : 01634 725527, Fax : 01634 739111  
Email: sales@allpsu.co.uk Web: www.allpsu.co.uk**