

- Miniature Size, High Power Density.
- Protections: Short Circuit / Overload / OVP
- Meet EMS EN50082-2 / EN61000-6-2 Heavy Industrial Level (35-150W)
- Withstand 300 VAC Surge Input For 5s
- High Operating Temperature Up To 70 °C
- Withstand 5G Vibration Test
- High Efficiency, Long Life And High Reliability
- 100% Full Load Burn-In Test
- 3 Year Warranty
- DIN Rail Mounting Kits Available



Specification

AC Input Voltage Range.....	88-264 VAC, 47-63 Hz
AC Inrush current (max).....	Cold start, 40 A @ 230 VAC
DC Output Adjustment Range.....	CH1 : -5% - +10%
Over Load Protection.....	110%-150% hiccup mode, auto recovery
Over Voltage Protection.....	115%-135% of output voltage, hiccup mode (auto-recovery)
Isolation Voltage.....	I/P-O/P: 3 kVAC, I/P-F/G: 1.5 kVAC, O/P-F/G: 0.5 kVAC, 1 min.
Operating Temperature.....	-25 to +70 °C (derates above 50 °C), -40 °C start-up possible
Vibration.....	10-500 Hz, 5G 10 min/1 cycle, period for 60 min each along X, Y, Z axes.
Safety Standards.....	UL60950-1, TUV EN60950-1 approved
EMC Standards.....	EN55022 class B, EN61000-3-2, 3 EN61000-4-2, 3, 4, 5, 6, 8, 11 ENV50204 EN61000-6-2 (EN500082-2)
Connection.....	Terminal block
Dimensions.....	129(L) x 98(W) x 38(H) mm (RD-65) 159(L) x 97(W) x 38(H) mm (RD-85)
MTBF.....	265.9 k hrs (RD-65), 239.4 khrs (RD-85) (MIL-HDBK-217F) @ 25 °C
Weight.....	0.44 kg (RD-65), 0.6 kg (RD-85)

Models and Ratings

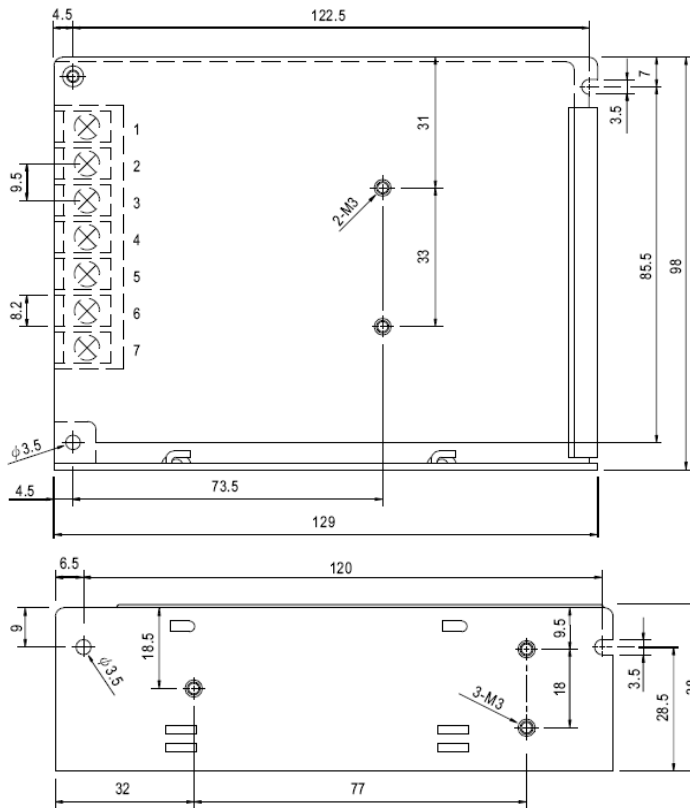
Model	Output 1	Output 2	Ripple & Noise	Efficiency
RD-65A	5 V / 0.3~8 A	12 V / 0.2~4 A	80 mV / 120 mV	79%
RD-65B	5 V / 0.3~8 A	24 V / 0.2~3 A	80 mV / 150 mV	78%
RD-85A	5 V / 2~10 A	12 V / 0.3~5 A	80 mV / 120 mV	78%
RD-85B	5 V / 2~10 A	24 V / 0.3~2.5 A	80 mV / 150 mV	80%

(Isolated output versions of the above units are also available, part number would be: **RID-65x** or **RID85x**)

For mechanical & connection details see next page

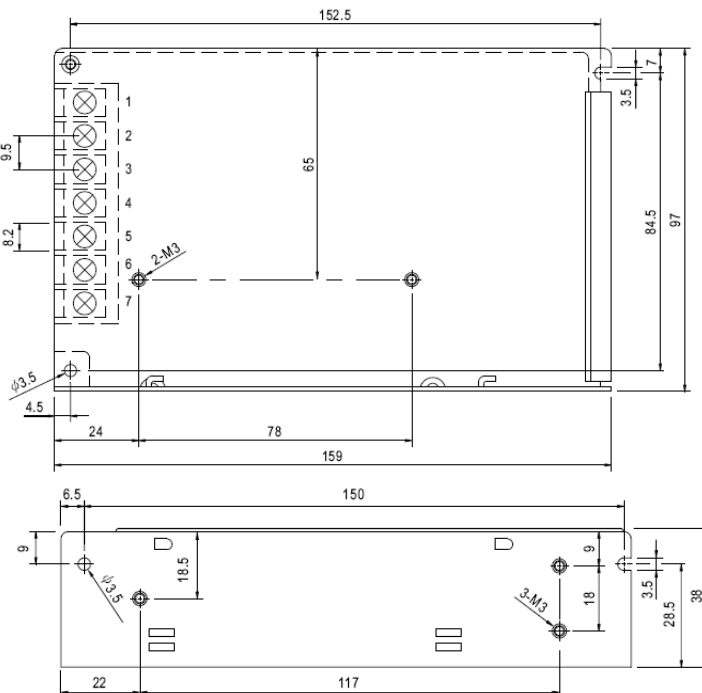
65-85 Watt, RD Series, (Fully Enclosed, Dual Output)

Mechanical Details RD65 Models



Terminal	Function
1	AC Live
2	AC Neutral
3	GND
4,6	O/P Common
5	+V2 Out
7	+V1 Out

RD-85 Models



Pin	Function
1	AC Live
2	AC Neutral
3	GND
4,6	O/P Common
5	+V2 Out
7	+V1 Out

Specifications May Change Without Notice, E&OE. ALL PSU Terms & Conditions apply

**ALL PSU Ltd, Unit D6 Laser Quay, Culpeper Close, Medway City Estate
Rochester, Kent, ME2 4HU, Tel : 01634 725527, Fax : 01634 739111
Email: sales@allpsu.co.uk Web: www.allpsu.co.uk**