

- Universal Input
- High Efficiency/High Reliability
- Adjustment on O/P: 1
- Convection Cooled
- Short Circuit/Over Voltage/Over Load Protection
- 100% Full Load Burn In Test
- Approvals UL/CUL/CE
- 2 Year Warranty



Specification

Input Voltage.....	90~264 VAC, 47~63 Hz, 120~370 VDC
Output Voltages.....	See table below, adjusts by -5 ~ +10% O/P: 1
Over Load Protection.....	105~150% Hiccup Mode, Auto Recovery
Over Voltage Protection.....	Output 1 (4.75~5.5V)
Inrush Current.....	15 A @115 VAC, 30 A @ 230 VAC (cold start)
Set Up, Rise, Hold Up Time.....	800 ms, 20 ms, 70 ms @ full load
Isolation Voltage.....	I/P-O/P: 3kVAC, I/P-FG: 1.5 kVAC, 1 minute
Operating Temperature.....	-10 ~ +60 °C (refer to derating curve)
Efficiency.....	76% (typical)
Safety Standards.....	UL60950-1, TUV EN60950-1 (IQ-60 only)
EMC Standards.....	EN55022 (CISPR22) Class B, EN61000-4-2, 3, 4, 5, 6, 8, 11 EN50204 light industry level criteria A EN61000-3-2, 3
MTBF.....	313 khrs IQ-60, 284.8 khrs Q-60 (MIL-HDBK-217F) @ 25 °C
Weight.....	0.56 kg each

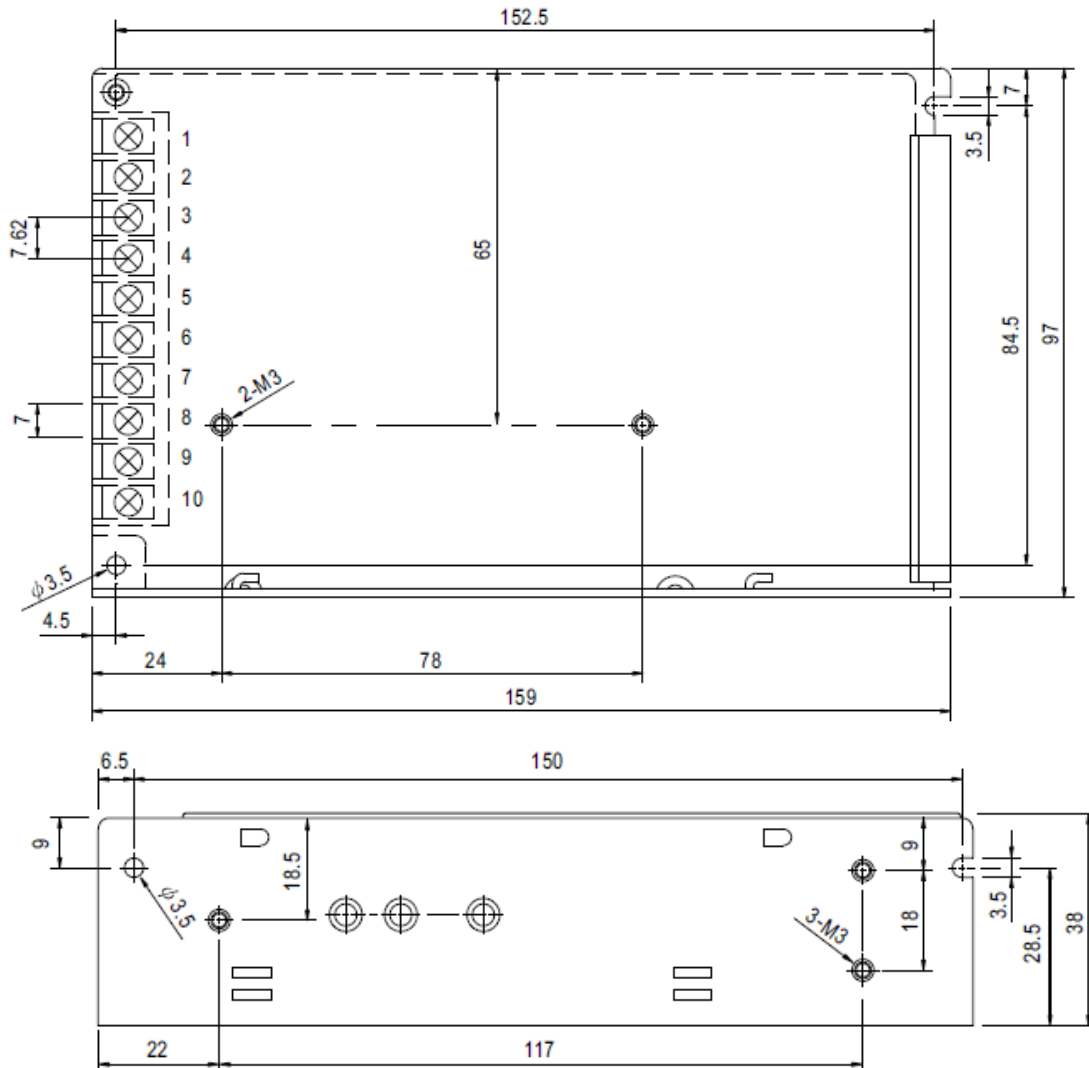
Models and Ratings

Model	Output 1	Output 2	Output 3	Output 4	Max Power
Q-60B	5V / 0.5~8A	12V / 0.1~3A	-5V / 0~1A	-12V / 0~1A	60 W
Q-60C	5V / 0.5~8A	15V / 0.1~3A	-5V / 0~1A	-15V / 0~1A	60 W
Q-60D	5V / 0.5~8A	12V / 0.1~3A	24V / 0~1.5A	-12V / 0~1A	62 W
IQ-60D	5V / 0.5~3A	12V / 0.1~1A	-12V / 0.1~1A	24V / 0.2~2A	51 W
IQ-60F	5V / 0.5~3A	15V / 0.1~1A	-15V / 0.1~1A	24V / 0.2~2A	54 W

Note: For IQ-60 units, 5 Volt and 24 Volt outputs are isolated from other rails.

For mechanical& connection details see next page

Mechanical Details



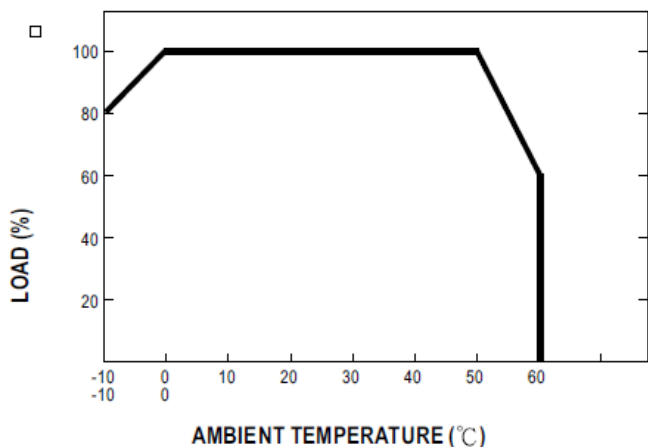
Connection details (IQ-60 models)

Terminal	Function	Pin No.	Function
1	AC Live	6	+V2 Out
2	AC Neutral	7	-V4 Out
3	F/G	8	+V4 Out
4	-V3 Out	9	-V1 Out
5	DC Out Com.	10	+V1 Out

Connection details (Q60 models)

Terminal	Function	Pin No.	Function
1	AC Live	6	+V2 Out
2	AC Neutral	7	Rtn. Com.
3	F/G	8	+V1 Out
4	+V3 Out	9	
5	+V4 Out	10	

Temp. Derating Curve



Specifications can change without notice, E&OE. ALL PSU Terms & Conditions apply.

ALL PSU Ltd, Unit D6 Laser Quay, Culpeper Close, Medway City Estate, Rochester, Kent, ME2 4HU, Tel : 01634 725527, Fax : 01634 739111

Email : sales@allpsu.co.uk, Web : www.allpsu.co.uk