

ALL PSU DATA SHEET.

15 Watt Encapsulated DC/DC-converter SI15W1

- Output Power 15W max. Small Case Size 50 x 25 x 10mm
- Input /Output Galvanically Isolated
- π -Filtering At Input And Output
- Overload Protected
- Copper Case
- For High Ambient Temperatures (125°C) And Long Life
- Wide Input Range From 9 to 130 Volts DC

- Standard Models (Other Input / Output Versions May Be Available).

Input Range Minimum	+ / - 25 %			
Input Order Code SI15W1-x	2	4	5	7
Nominal Input Voltage DC	12V	24V	48V	110V
Output	Isolated			
Power Rating	Max. 15 W			
Output Order Code SI15W1-x-x	1	2	3	4
Output Voltage	5V	12V	15V	24V
Output Current	3A	1,25A	1A	0,6A
Accuracy Output	Typ.0,5%			

- Specification

(after warm-up-time at 25°C)

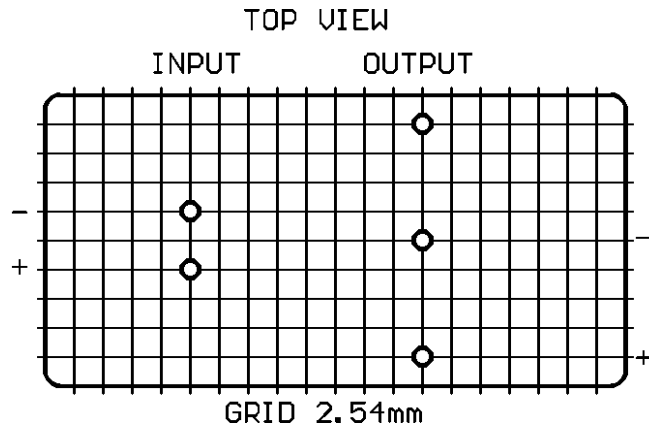
- Input Voltage Range At Full Load	12 VDC 24 VDC 48 VDC 110 VDC	(9V- 18) (16V- 36V) (36V- 60V) (83V-130V)
- Output Voltage Accuracy @ 50% Load	typ. 1%	
- Regulation		
- Load Variation 10-90% static	typ. 1,0%(max.2,0%)	
- Input Voltage Variation	typ. 0,5%(max.1,0 %)	
- Recovery Time	100 μ s (max. 500 μ s)	
- Efficiency At Full Load And Nominal Input 24/24	typ. 85%	
- Reflected Output Ripple	1% pp.max.	
- Input Ripple	1% pp max.	
- Storage Temperature Range	-40°C...+125°C	
- Operating Temperature	-40°C...+125°C	
- Derating Above 85°C	2,5% / °C	
- Temperature Coefficient	0,01 %°K	
- Humidity	100 % RH	
- Isolation Input / Output	1000 VDC / 1 min.	
- Isolation Capacity Input / Output	typ.100 pF *	
- Isolation Resistance	1G Ohm	
- * with anti-interference capacitor	ca. 1nF	

ALL PSU DATA SHEET.

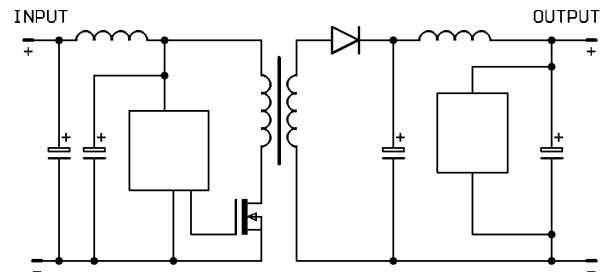
Cont.. 15 Watt, Encapsulated DC-DC Converter, SI15W1.

- Overvoltage Protection	On Request
- Protection System	IP68

Pin-Out



Basic Circuit drawing



Order Example

SI15W 1 - 4 2

Unit Type = SI15W
Number Of Outputs = (1)
Input Voltage = (24V)
Output Voltage = (12V)

Case Dimensions

50.8 x 25.4 x 10.2mm

Pin Diametre Approx.: 0.8mm

Notes

Other input/output voltages or special modules on request.
Higher output currents on request.
Higher break down voltage (input/output) on request.
The units are available with earth-pin on request.
Subject to technical changes.

Other Units In This Range Are Available From 3 to 200 Watts.

*For Our Full Range Of DC-DC Converters From 1/4 Watt To 4000 Watts
Please Contact The ALL PSU Sales Office.
Or Visit Our Web Site At www.allpsu.co.uk*

ALL PSU Ltd, Unit D6 Laser Quay, Culpeper Close, Medway City Estate,
Rochester, Kent, ME2 4HU, Tel : 01634 725527, Fax : 01634 739111
Email : sales@allpsu.co.uk, Web : www.allpsu.co.uk