

ALL PSU DATA SHEET.

20 Watt Encapsulated DC/DC-converter SI20W1

- Output Power 20W max.
- Input / Output Isolated
- Built In Filtering At Input
- Overload And Over-Temperature Protected
- Copper Case
- For High Ambient Temperatures (125°C) And Long Life
- Wide Input Range
- Over Voltage Protection
- Output Adjustment



Standard Models (Other Input / Output Versions May Be Available).

Input Range Minimum	+/- 25 %			
Input Voltage Order Code SI20W1-x	2	4	5	7
Nominal Input Voltage DC	12V	24V	48V	110V
Input To Output	Isolated			
Power Rating	Max. 20 W			
Output Voltage Order Code SI20W1-x-x	1	2	3	4
Output Voltage	5V	12V	15V	24V
Output Current	4A	1,6A	1,3A	0,8A
Accuracy	Typ.1%			

Note :

With 12 Volt input, maximum limit of 15W output power

Specification

(after warm-up-time at 25°C)

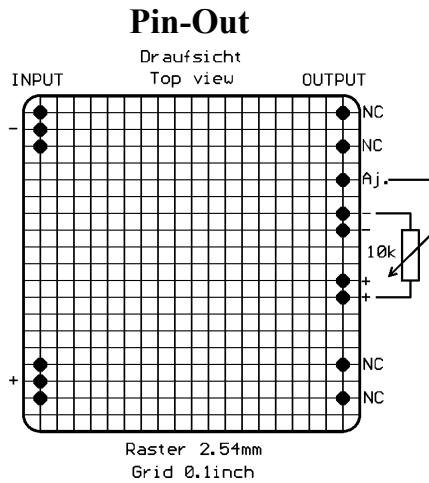
Input Voltage Range @ Full Load	12 VDC (9V-18V) 24 VDC (16V-36V) 48 VDC (36V-60V) 110VDC (83V-130V)
Output Voltage Accuracy @ 50% Load	typ. 1%
Regulation	
- Load Variation 10-90% static	typ. 1.0%(max.2,0%)
- Input Voltage Variation	typ. 0.5%(max.1,0 %)
- Recovery Time	100 µs (max. 500µs)
Efficiency @ Full Load & Nominal Input 24V / Output 24V	typ. 85%
- Output Ripple	0.5% pp.max.
- Input Ripple	0.5% pp max.
- Storage Temperature Range	-40°C...+125°C
- Operating Temperature	-40°C...+125°C
- Derating Above 85°C	2.5% / °C
- Temperature Coefficient	0.02 %°C
- Humidity	100 % RH
- Isolation Input / Output	1000 VDC / 1 min.
- Isolation Resistor	1G Ohm
- Output Adjustment Range	+/- 5%
- Overvoltage protection	Standard
- At 5V output	ca./approx. 6.5V
- Ingress Protection System	IP68

ALL PSU Ltd, Unit D6 Laser Quay, Culpeper Close, Medway City Estate,
Rochester, Kent, ME2 4HU, Tel : 01634 725527, Fax : 01634 739111
Email : sales@allpsu.co.uk Web : www.allpsu.co.uk

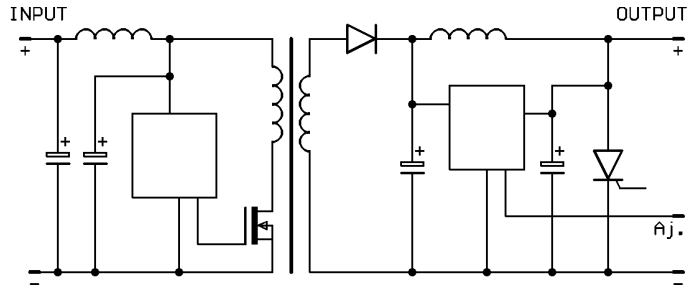
ALL PSU DATA SHEET.

Cont... 20 Watt Encapsulated DC-DC Converter, SI20W1 Series

Page 2 of 2.



Block Diagram



Dimensions

50.8mm x 50.8mm x 10.2mm
Weight Approx. 60g
Pin Diameter Approx.: 0.8mm
Pins Marked (nc) Are Mechanical
Fixings Only And Are Not
Electrically Connected.

Part Number Example

SI20W1-7-4
Series 20 Watt Single Output
Input Nominal 110 Volts DC
Output 24 Volts DC

Notes

Other input / output voltages or special modules on request.
Higher output currents on request.
Higher break down voltage (input / output) on request..
The units are available with earth-pin on request.
Subject to technical changes.

Other Units In This Range Are Available From 3 To 200 Watts

*For Our Full Range Of DC-DC Converters From 1/4 Watt To 4000 Watts
Please Contact The ALL PSU Sales Office,*

Or Visit Us At www.allpsu.co.uk

ALL PSU Ltd. Unit D6 Laser Quay, Culpeper Close, Medway City Easte,
Rochester, Kent, ME2 4HU, Tel : 01634 725527, Fax : 01634 739111,
Email : sales@allpsu.co.uk Web : www.allpsu.co.uk