

240 Watt, ARF240U Series, U-Channel Power Supply



electronic **power** solutions



- Universal AC Input
- 240 Watt with 8CFM Forced Air and Natural Convection
- U-Channel Chassis or option of fully enclosed format.
- High efficiency up to 94%
- Short Circuit, Over Voltage, Over Load protected
- No Load Power Consumption <0.5 Watts
- Full approvals: UL / IEC / EN 62368-1
- Very compact & low profile case size
- Operating Altitude 5000M
- 3-Year Product Warranty

Specification

Input Voltage.....	90~264 VAC, 47~63 Hz (120-370 VDC)
Inrush Current.....	45 A @ 115 VAC, 90 A @ 230 VAC
Output Voltage.....	Single Outputs, See table below
Load Regulation.....	+/-1%
Line Regulation.....	+/-1%
Over Voltage Protection.....	Auto Recovery
Short Circuit Protection.....	Protection level 1 (nominal) : Continuous, Auto recovery Protection level 2 (instantaneous high current) : Latch
Overload Protection.....	Auto Recovery, hiccup mode
Hold Up Time.....	10 ms, min
Ripple & Noise.....	1% max
Input to Output Isolation.....	I/P-O/P: 4 kVAC,
Operating Temperature	-30 to +80 °C, see derating curve
Storage Temperature.....	-30 to +80 °C
Safety Standards.....	UL 60950 UL / IEC / EN 62368
EMC.....	EN55032 Class B, EN55032 Class I Class B / Class II Class A EN55035
Mechanical	104.0 x 62.5 x 39.2 mm
Connections Input & Output.....	Standard = JST Input Connections with Screw Terminal Output Connections Type A (Optional) JST Input and Output Connections

Models and Ratings

Model	Output Voltage	Output Current				Efficiency
		8CFM	Conduction	Convection (115VAC)	Convection (230VAC)	
ARF240U-12S-AP	12 V	20 A	20 A	17.5 A	19.5 A	92.5 %
ARF240U-24S-AP	24 V	10 A	10 A	8.96 A	10 A	93 %
ARF240U-48S-AP	48.0	5 A	5 A	4.48 A	5 A	94 %

Please see next page for mechanical drawings.

**ALL PSU Ltd, Unit D6 Laser Quay, Culpeper Close, Medway City Estate,
Rochester, Kent, ME2 4HU, Tel : 01634 725527, Fax : 01634 739111
Email : sales@allpsu.co.uk, Web : www.allpsu.co.uk**

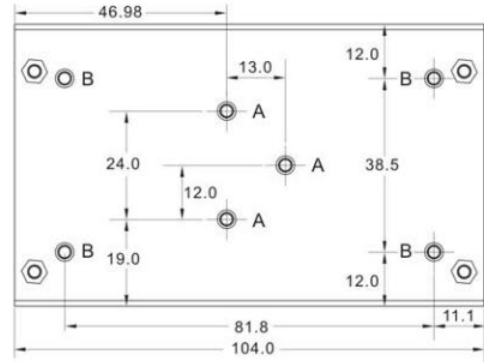
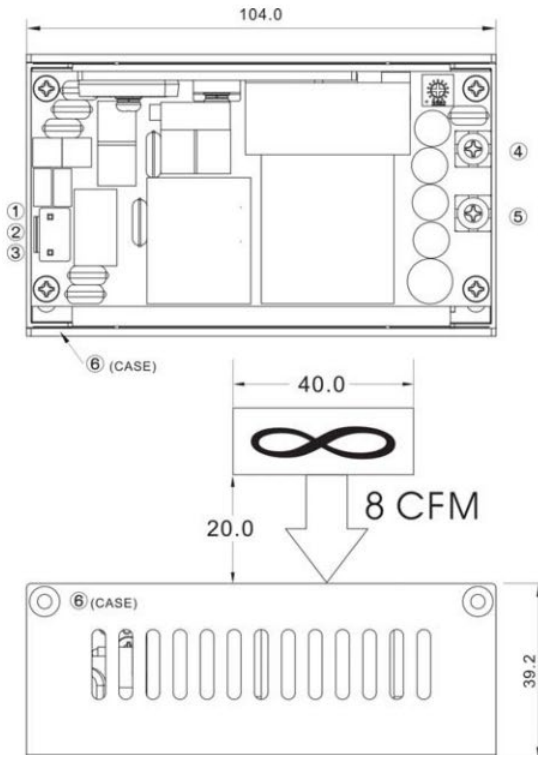
240 Watt, ARF240U Series, U-Channel Power Supply



electronic **power** solutions

Standard Type

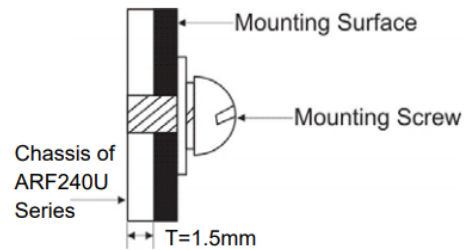
Mechanical Drawings



A= For fixture to chassis only
 A=M3x0.5P
 B=For fixture to pcb/chassis only
 B=M3x0.5P
 Torque:3±0.5 Kgf.cm

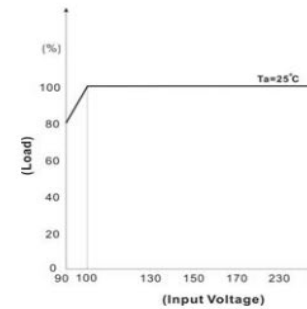
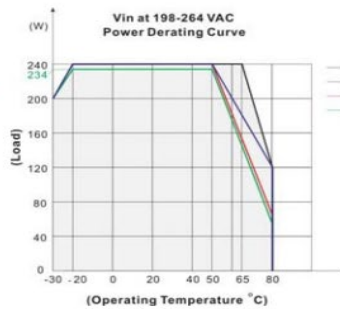
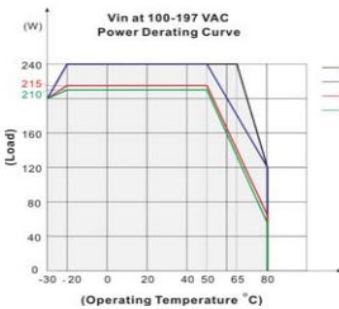
ASSEMBLY INSTRUCTIONS

*U Case T=1.5mm
 Customer is advised to screw into the threads no more than 1.5mm



Brands		Alex		JST	
PIN#	Single	Mating Housing	Terminal	Mating Housing	Terminal
1	AC IN (N)	9396-3	96T series	VHR-3N	SVH-41T-P1.1
2	NO PIN				
3	AC IN (L)				
4	+DC OUT	Terminal : M3.5 Pan HD screw in 2 positions Torque to 8 lbs-in(90 cNm) max.			
5	-DC OUT				
6	PE	—	—	—	—

DERATING



Specifications may change without notice. E&OE. ALL PSU Terms & Conditions apply.

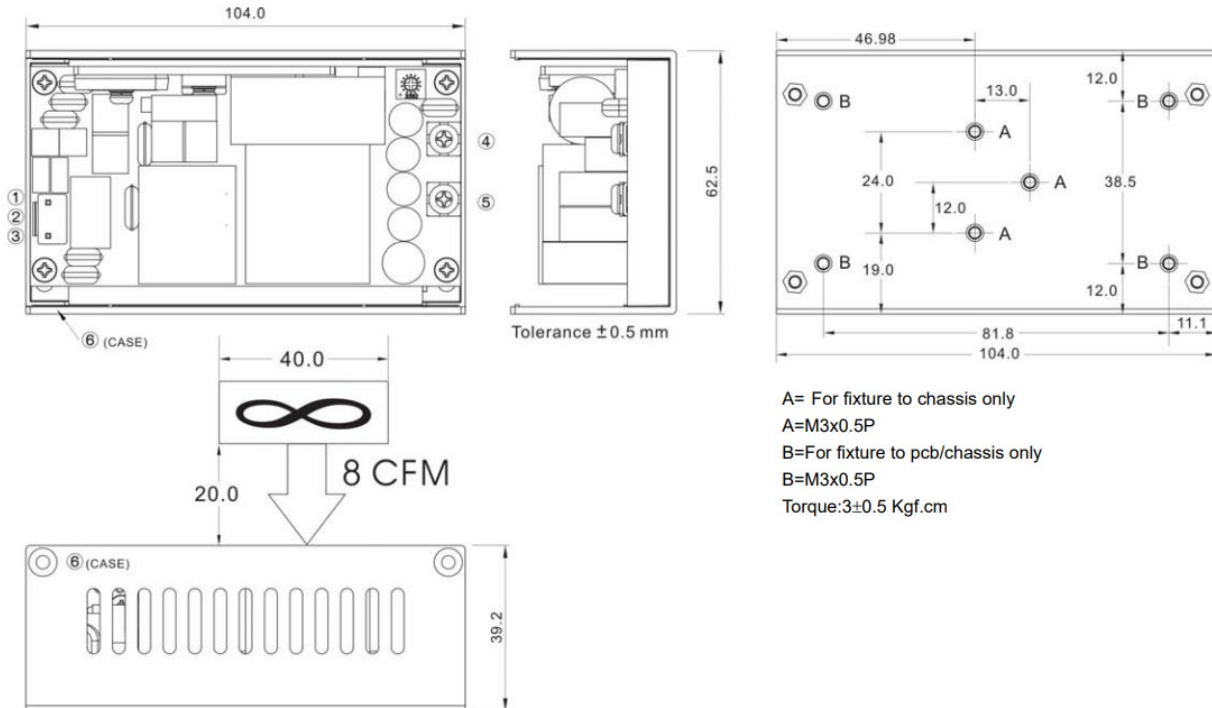
**ALL PSU Ltd, Unit D6 Laser Quay, Culpeper Close, Medway City Estate,
 Rochester, Kent, ME2 4HU, Tel : 01634 725527, Fax : 01634 739111,
 Email : sales@allpsu.co.uk Web : www.allpsu.co.uk**

240 Watt, ARF240U Series, U-Channel Power Supply



electronicpowersolutions

Type A (JST Connections)



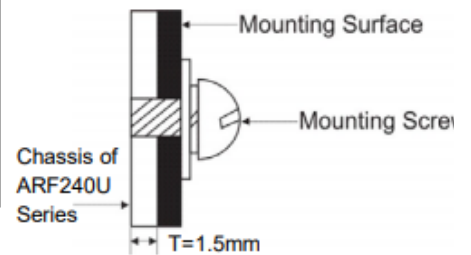
A= For fixture to chassis only
 A=M3x0.5P
 B=For fixture to pcb/chassis only
 B=M3x0.5P
 Torque:3±0.5 Kgf.cm

Brands		Alex		JST	
PIN#	Single	Mating Housing	Terminal	Mating Housing	Terminal
1	AC IN (N)	9396-3	96T series	VHR-3N	SVH-41T-P1.1
2	NO PIN				
3	AC IN (L)				
4-6	+DC OUT	9396-6	96T series	VHR-6N	SVH-41T-P1.1
7-9	-DC OUT				
10	PE	—	—	—	—

ASSEMBLY INSTRUCTIONS

*U Case T=1.5mm

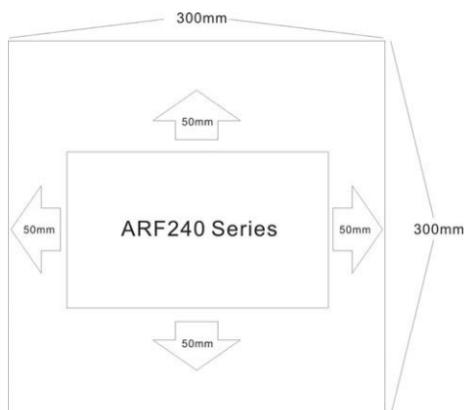
Customer is advised to screw into the threads no more than 1.5mm



Recommended Base Plate Size for Conduction Cooling :

6. The size of the suggested aluminum plate is shown as below. And for optimizing thermal performance, the aluminum plate must have an even and smooth surface (or coated with thermal grease), and ARF240 series must be firmly mounted at the center of the aluminum plate.

300 x 300 x 3.0 mm



Specifications may change without notice.
 E&OE. ALL PSU Terms & Conditions apply.

**ALL PSU Ltd, Unit D6 Laser Quay,
 Culpeper Close, Medway City Estate,
 Rochester, Kent, ME2 4HU,
 Tel : 01634 725527, Fax : 01634 739111,
 Email : sales@allpsu.co.uk Web : www.allpsu.co.uk**